

For Research Use Only

# CoraLite® Plus 488-conjugated Cyclophilin B Monoclonal antibody



Catalog Number: CL488-66047

Featured Product

## Basic Information

<b>Catalog Number:</b> CL488-66047	<b>GenBank Accession Number:</b> BC032138	<b>Purification Method:</b> Protein A purification
<b>Size:</b> 100ul , Concentration: 2000 µg/ml by Nanodrop;	<b>GeneID (NCBI):</b> 5479	<b>CloneNo.:</b> 8H4F1
<b>Source:</b> Mouse	<b>Full Name:</b> peptidylprolyl isomerase B (cyclophilin B)	<b>Recommended Dilutions:</b> WB 1:500-1:1000
<b>Isotype:</b> IgG2a	<b>Calculated MW:</b> 216 aa, 24 kDa	<b>Excitation/Emission maxima wavelengths:</b> 493 nm / 522 nm
<b>Immunogen Catalog Number:</b> AG17957	<b>Observed MW:</b> 19-24 kDa	

## Applications

**Tested Applications:**  
IF, WB

**Positive Controls:**

WB: Jurkat cells, HeLa cells

**Species Specificity:**  
human, mouse

## Background Information

PPIB, also named as CYPB, SCYLP, PPIase B and CYP-S1, belongs to the cyclophilin-type PPIase family and PPIase B subfamily. PPIases accelerate the folding of proteins. It catalyzes the cis-trans isomerization of proline imidic peptide bonds in oligopeptides. PPIB is secreted in biological fluids such as blood or milk and binds to a specific receptor present on the human lymphoblastic cell line Jurkat and on human peripheral blood lymphocytes. The full-length of PPIB has 216aa (24 kDa), and a 33aa-signal peptide could be removed in the mature form (about 19 kDa).

## Storage

**Storage:**

Store at -20°C. Avoid exposure to light. Stable for one year after shipment.

**Storage Buffer:**

PBS with 50% Glycerol, 0.05% Proclin300, 0.5% BSA, pH 7.3.

Aliquoting is unnecessary for -20°C storage

\*\*\* 20ul sizes contain 0.1% BSA

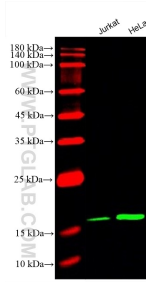
For technical support and original validation data for this product please contact:

T: 1 (888) 4PTGLAB (1-888-478-4522) (toll free  
in USA), or 1(312) 455-8498 (outside USA)

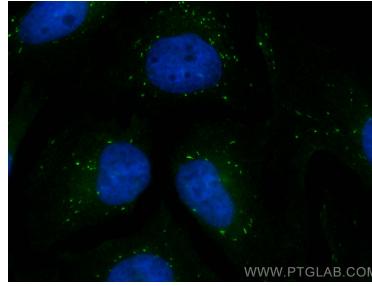
E: [proteintech@ptglab.com](mailto:proteintech@ptglab.com)  
W: [ptglab.com](http://ptglab.com)

This product is exclusively available under Proteintech Group brand and is not available to purchase from any other manufacturer.

## Selected Validation Data



Various lysates were subjected to SDS PAGE followed by western blot with CL488-66047 (Cyclophilin B antibody) at dilution of 1:800 incubated at room temperature for 1.5 hours.



Immunofluorescent analysis of (4% PFA) fixed HeLa cells using CoraLite® Plus 488 Cyclophilin B antibody (CL488-66047, Clone: 8H4F1) at dilution of 1:200.