

For Research Use Only

CoraLite® Plus 488-conjugated Albumin Monoclonal antibody

Catalog Number: CL488-66051

1 Publications



Basic Information

Catalog Number:

CL488-66051

Size:

100ul , Concentration: 1000 ug/ml by

Nanodrop;

Source:

Mouse

Isotype:

IgG1

Immunogen Catalog Number:

AG9885

GenBank Accession Number:

BC034023

GeneID (NCBI):

213

UNIPROT ID:

P02768

Full Name:

albumin

Calculated MW:

609 aa, 69 kDa

Observed MW:

66 kDa

Purification Method:

Protein G purification

CloneNo.:

4A1C11

Recommended Dilutions:

IF/ICC 1:200-1:800

Excitation/Emission maxima
wavelengths:

493 nm / 522 nm

Applications

Tested Applications:

IF/ICC, FC (Intra)

Cited Applications:

IF

Species Specificity:

human, rat, pig

Cited Species:

mouse

Positive Controls:

IF/ICC : HepG2 cells,

Background Information

Albumin is the most abundant protein in blood plasma. Alterations of level of serum albumin are linked to variety of diseases. Albumin is expressed exclusively by well-differentiated hepatocytes, thus anti-albumin has been used to mark hepatocytes. (21388516, 23832071)

Notable Publications

Author	Pubmed ID	Journal	Application
Sixian Qi	35429439	Mol Cell	IF

Storage

Storage:

Store at -20°C. Avoid exposure to light. Stable for one year after shipment.

Storage Buffer:

PBS with 50% Glycerol, 0.05% Proclin300, 0.5% BSA, pH 7.3.

Aliquoting is unnecessary for -20°C storage

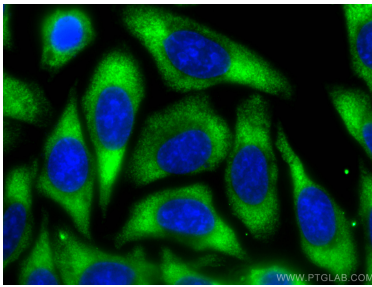
For technical support and original validation data for this product please contact:

T: 1 (888) 4PTGLAB (1-888-478-4522) (toll free
in USA), or 1(312) 455-8498 (outside USA)

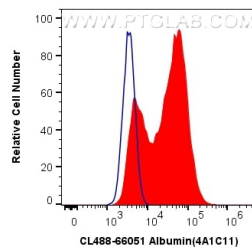
E: proteintech@ptglab.com
W: ptglab.com

This product is exclusively available under Proteintech Group brand and is not available to purchase from any other manufacturer.

Selected Validation Data



Immunofluorescent analysis of (-20°C Ethanol) fixed HepG2 cells using Coralite® Plus 488-conjugated Albumin antibody (CL488-66051, Clone: 4A1C11) at dilution of 1:400.



1X10⁶ HepG2 cells were intracellularly stained with 0.4 ug Coralite® Plus 488 Anti-Human Albumin (CL488-66051, Clone:4A1C11) (red), or 0.4 ug Coralite® Plus 488 Mouse IgG1 Isotype Control (MOPC-21) (CL488-65124, Clone: MOPC-21) (blue). Cells were fixed with 4% PFA and permeabilized with Flow Cytometry Perm Buffer (PF00011-C).