

For Research Use Only

CoraLite® Plus 488-conjugated Serpine C1/Antithrombin III Monoclonal antibody



Catalog Number:CL488-66052

Basic Information

Catalog Number: CL488-66052	GenBank Accession Number: BC022309	Purification Method: Protein G purification
Size: 100ul , Concentration: 1000 µg/ml by Nanodrop;	GeneID (NCBI): 462	CloneNo.: 2B2E5
Source: Mouse	Full Name: serpin peptidase inhibitor, clade C (antithrombin), member 1	Recommended Dilutions: IF 1:50-1:500
Isotype: IgG1	Calculated MW: 464 aa, 53 kDa	Excitation/Emission maxima wavelengths: 493 nm / 522 nm
Immunogen Catalog Number: AG9880	Observed MW: 53 kDa	

Applications

Tested Applications: IF	Positive Controls: IF : HepG2 cells,
Species Specificity: human, mouse, rat	

Background Information

SERPINC1, also named Antithrombin III or Antithrombin, is a plasma protease inhibitor and a member of the serpin superfamily. This protein inhibits thrombin as well as other activated serine proteases of the coagulation system, and it regulates the blood coagulation cascade. More than 120 mutations have been identified for this gene, many of which are known to cause antithrombin-III deficiency.

Storage

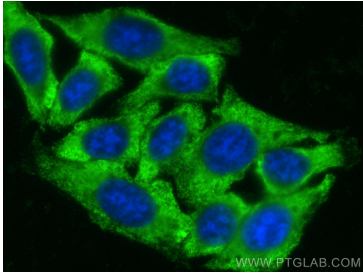
Storage:
Store at -20°C. Avoid exposure to light. Stable for one year after shipment.
Storage Buffer:
PBS with 50% Glycerol, 0.05% Proclin300, 0.5% BSA, pH 7.3.
Aliquoting is unnecessary for -20°C storage

*** 20ul sizes contain 0.1% BSA

For technical support and original validation data for this product please contact:
T: 1 (888) 4PTGLAB (1-888-478-4522) (toll free in USA), or 1(312) 455-8498 (outside USA)
E: proteintech@ptglab.com
W: ptglab.com

This product is exclusively available under Proteintech Group brand and is not available to purchase from any other manufacturer.

Selected Validation Data



Immunofluorescent analysis of (-20°C Ethanol) fixed HepG2 cells using CoraLite® Plus 488 Serpin C1/Antithrombin III antibody (CL488-66052, Clone: 2B2E5) at dilution of 1:200.