

For Research Use Only

CoraLite® Plus 488-conjugated PA2G4 Monoclonal antibody

Catalog Number: CL488-66055

Featured Product



Basic Information

Catalog Number:

CL488-66055

Size:

100ul , Concentration: 1000 ug/ml by Nanodrop;

Source:

Mouse

Isotype:

IgG2a

Immunogen Catalog Number:

AG7850

GenBank Accession Number:

BC001951

GeneID (NCBI):

5036

UNIPROT ID:

Q9UQ80

Full Name:

proliferation-associated 2G4, 38kDa

Calculated MW:

44 kDa

Observed MW:

38-42 kDa, 48 kDa

Purification Method:

Protein A purification

CloneNo.:

3G10D9

Recommended Dilutions:

IF/ICC 1:50-1:500

Excitation/Emission maxima

wavelengths:

493 nm / 522 nm

Applications

Tested Applications:

IF/ICC

Species Specificity:

human, mouse, rat

Positive Controls:

IF/ICC : HeLa cells,

Background Information

PA2G4 (EBP1), first identified as an ErbB3 binding protein, is a 38 kDa protein that is widely expressed in cultured cells and tissues. The presence of several functional domains such as a nuclear localization sequence (NLS), LxxLL and LxCxE suggests the involvement of Ebp1 in cell signaling pathways and gene transcription regulation. This antibody is a mouse mono-clonal antibody raised against full length PA2G4 of human origin.

Storage

Storage:

Store at -20°C. Avoid exposure to light. Stable for one year after shipment.

Storage Buffer:

PBS with 50% Glycerol, 0.05% Proclin300, 0.5% BSA, pH 7.3.

Aliquoting is unnecessary for -20°C storage

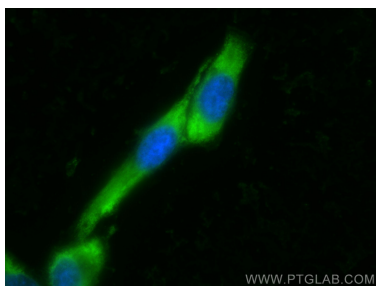
For technical support and original validation data for this product please contact:

T: 1 (888) 4PTGLAB (1-888-478-4522) (toll free in USA), or 1(312) 455-8498 (outside USA)

E: proteintech@ptglab.com
W: ptglab.com

This product is exclusively available under Proteintech Group brand and is not available to purchase from any other manufacturer.

Selected Validation Data



Immunofluorescent analysis of (-20°C Ethanol) fixed HeLa cells using Coralite® Plus 488 PA2G4 antibody (CL488-66055, Clone: 3G10D9) at dilution of 1:200.