

For Research Use Only

CoraLite® Plus 488-conjugated RAB27A Monoclonal antibody

Catalog Number:CL488-66058

Featured Product



Basic Information

Catalog Number:

CL488-66058

Size:

100ul , Concentration: 1000 µg/ml by Nanodrop;

Source:

Mouse

Isotype:

IgG1

Immunogen Catalog Number:

AG12382

GenBank Accession Number:

BC107680

GeneID (NCBI):

5873

UNIPROT ID:

P51159

Full Name:

RAB27A, member RAS oncogene family

Calculated MW:

221 aa, 25 kDa

Observed MW:

27 kDa

Purification Method:

Protein G purification

CloneNo.:

1C4B8

Recommended Dilutions:

IF/ICC: 1:50-1:500

FC (Intra): 0.4 µg per 10⁶ cells in a 100 µl suspension

Excitation/Emission maxima wavelengths:

493 nm / 522 nm

Applications

Tested Applications:

IF/ICC, FC (Intra)

Species Specificity:

human

Positive Controls:

IF/ICC : HepG2 cells,

FC (Intra) : Jurkat cells, HeLa cells

Background Information

Rab27a is a member of a large family of Ras-related small GTPases. The protein is membrane-bound and may be involved in protein transport and small GTPase mediated signal transduction. Recent studies suggest that Rab27a is associated with melanosomes in pigmented cells and regulates melanosome transport via its interaction with actin-based cellular motors such as myosin Va and myosin VIIa. RAB27A is also required for regulated secretion in cytotoxic T lymphocytes. Rab27a is implicated in several diseases, including Griscelli syndrome, choroideremia, and the Hermansky-Pudlak syndrome mouse model, gunmetal.

Storage

Storage:

Store at -20°C. Avoid exposure to light. Stable for one year after shipment.

Storage Buffer:

PBS with 50% glycerol, 0.05% Proclin300, 0.5% BSA, pH7.3

Aliquoting is unnecessary for -20°C storage

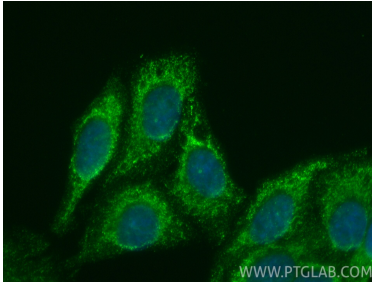
For technical support and original validation data for this product please contact:

T: 1 (888) 4PTGLAB (1-888-478-4522) (toll free in USA), or 1(312) 455-8498 (outside USA)

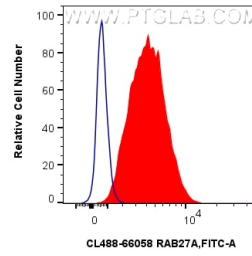
E: proteintech@ptglab.com
W: ptglab.com

This product is exclusively available under Proteintech Group brand and is not available to purchase from any other manufacturer.

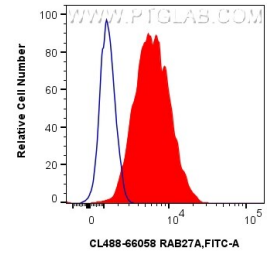
Selected Validation Data



Immunofluorescent analysis of (4% PFA) fixed HepG2 cells using CoraLite® Plus 488 RAB27A antibody (CL488-66058, Clone: 1C4B8) at dilution of 1:200.



1×10^6 Jurkat cells were intracellularly stained with 0.4 ug CoraLite® Plus 488 Rab27a Monoclonal Antibody (CL488-66058, Clone:1C4B8)(red), or 0.4 ug Isotype Control (blue). Cells were fixed and permeabilized with Intracellular Flow Cytometry Fixation & Permeabilization Buffer Kit (PF00019).



1×10^6 HeLa cells were intracellularly stained with 0.4 ug CoraLite® Plus 488 Rab27a Monoclonal Antibody (CL488-66058, Clone:1C4B8)(red), or 0.4 ug Isotype Control (blue). Cells were fixed and permeabilized with Intracellular Flow Cytometry Fixation & Permeabilization Buffer Kit (PF00019).