

For Research Use Only

CoraLite® Plus 488-conjugated RBM15 Monoclonal antibody



Catalog Number: CL488-66059

Featured Product

Basic Information

Catalog Number: CL488-66059	GenBank Accession Number: BC006397	Purification Method: Protein A purification
Size: 100ul , Concentration: 1000 µg/ml by Nanodrop;	GeneID (NCBI): 64783	CloneNo.: 4A1A4
Source: Mouse	Full Name: RNA binding motif protein 15	Excitation/Emission maxima wavelengths: 488 nm / 515 nm
Isotype: IgG2a	Calculated MW: 105 kDa	
Immunogen Catalog Number: AG17970	Observed MW: 107 kDa	

Applications

Tested Applications:
FC (Intra)

Species Specificity:
human

Background Information

RNA-binding motif protein 15 (RBM15) belongs to the SPEN protein family, which have repressor function in several signaling pathway, and may bind to RNA through interaction with spliceosome components. It was first described as a 5' translocation partner of the MAL gene in t(1,22)(p13;q13) infant acute megakaryocytic leukemia, and it functions in murine hematopoiesis through modulating Notch-induced transcriptional activation, which play crucial roles in leukemogenesis. Decreasing RBM15 levels with RNA interference could inhibit the growth and proliferation, block the cell cycle, and induce apoptosis in CML cells.

Storage

Storage:
Store at -20°C. Avoid exposure to light.

Storage Buffer:
PBS with 50% Glycerol, 0.05% Proclin300, 0.5% BSA, pH 7.3.

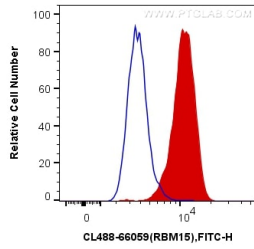
Aliquoting is unnecessary for -20°C storage

*** 20ul sizes contain 0.1% BSA

For technical support and original validation data for this product please contact:
T: 1 (888) 4PTGLAB (1-888-478-4522) (toll free in USA), or 1(312) 455-8498 (outside USA) E: proteintech@ptglab.com W: ptglab.com

This product is exclusively available under Proteintech Group brand and is not available to purchase from any other manufacturer.

Selected Validation Data



1X10⁶ HeLa cells were intracellularly stained with 0.4 ug CoraLite® Plus 488 Anti-Human RBM15 (CL488-66059, Clone:4A1A4) (red), or 0.4 ug Mouse IgG2a Isotype Control (CL488-66360-2, Clone: K11A1B2A2) (blue). Cells were fixed and permeabilized with Transcription Factor Staining Buffer Kit (PF00011).