

For Research Use Only

CoraLite® Plus 488-conjugated 14-3-3 Monoclonal antibody



Catalog Number: CL488-66061

1 Publications

Basic Information

Catalog Number: CL488-66061	GenBank Accession Number: BC056867	Purification Method: Protein G purification
Size: 100ul , Concentration: 1000 µg/ml by Nanodrop;	GeneID (NCBI): 10971	CloneNo.: 2E10A3
Source: Mouse	Full Name: tyrosine 3-monooxygenase/tryptophan 5-monooxygenase activation protein, theta polypeptide	Recommended Dilutions: IF 1:50-1:500
Isotype: IgG1	Calculated MW: 28 kDa	Excitation/Emission maxima wavelengths: 488 nm / 515 nm
Immunogen Catalog Number: AG6055	Observed MW: 31 kDa, 28 kDa	

Applications

Tested Applications: IF	Positive Controls: IF : HepG2 cells,
Cited Applications: IF	
Species Specificity: human, rat, mouse, pig	
Cited Species: rat	

Background Information

14-3-3 proteins interact with a wide spectrum of proteins and possess diverse functions. Mammals express seven distinct 14-3-3 isoforms (gamma, epsilon, beta, zeta, sigma, theta, tau) that form multiple homo- and hetero-dimers. 14-3-3 proteins display the highest expression levels in the brain, and have been implicated in several neurodegenerative diseases, including Alzheimer's disease and amyotrophic lateral sclerosis.

Notable Publications

Author	Pubmed ID	Journal	Application
Zhiwu Dong	36238560	Front Pharmacol	IF

Storage

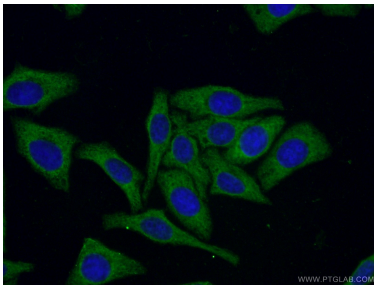
Storage:
Store at -20°C. Avoid exposure to light. Stable for one year after shipment.
Storage Buffer:
PBS with 50% Glycerol, 0.05% Proclin300, 0.5% BSA, pH 7.3.
Aliquoting is unnecessary for -20°C storage

*** 20ul sizes contain 0.1% BSA

For technical support and original validation data for this product please contact:
T: 1 (888) 4PTGLAB (1-888-478-4522) (toll free in USA), or 1(312) 455-8498 (outside USA)
E: proteintech@ptglab.com
W: ptglab.com

This product is exclusively available under Proteintech Group brand and is not available to purchase from any other manufacturer.

Selected Validation Data



Immunofluorescent analysis of (-20°C Ethanol) fixed HepG2 cells using CL488-66061 (14-3-3 antibody) at dilution of 1:50.