

CoraLite® Plus 488-conjugated NTF2 Monoclonal antibody

Catalog Number: **CL488-66063**

Basic Information

Catalog Number:

CL488-66063

Size:100ul , Concentration: 2000 µg/ml by
Nanodrop;**Source:**

Mouse

Isotype:

IgG1

Immunogen Catalog Number:

AG7879

GenBank Accession Number:

BC002348

GeneID (NCBI):

10204

UNIPROT ID:

P61970

Full Name:

nuclear transport factor 2

Calculated MW:

14 kDa

Observed MW:

13 kDa

Purification Method:

Protein G purification

CloneNo.:

4H7F9

Recommended Dilutions:

IF/ICC 1:50-1:500

**Excitation/Emission maxima
wavelengths:**

493 nm / 522 nm

Applications

Tested Applications:

IF

Species Specificity:

human

Positive Controls:

IF/ICC : HeLa cells,

Background Information

NUTF2 (nuclear transport factor 2), also named as NTF2, is a cytosolic protein responsible for nuclear import of Ran, a small Ras-like GTPase involved in a number of critical cellular processes, including cell cycle regulation, chromatin organization during mitosis, reformation of the nuclear envelope following mitosis, and controlling the directionality of nucleocytoplasmic transport. Nucleocytoplasmic translocation of NTF2 is regulated in mammalian cells, and may involve a tyrosine and/or threonine kinase-dependent signal transduction mechanism(s) (PMID: 22880006). The MW of this protein is 14 kDa, and this antibody specially recognises the 14 kDa protein.

Storage

Storage:

Store at -20°C. Avoid exposure to light. Stable for one year after shipment.

Storage Buffer:

PBS with 50% Glycerol, 0.05% Proclin300, 0.5% BSA, pH 7.3.

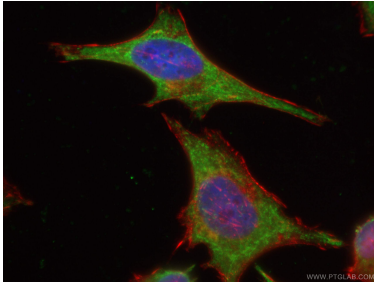
Aliquoting is unnecessary for -20°C storage

For technical support and original validation data for this product please contact:

T: 1 (888) 4PTGLAB (1-888-478-4522) (toll free
in USA), or 1(312) 455-8498 (outside USA)E: proteintech@ptglab.com
W: ptglab.com

This product is exclusively available under Proteintech
Group brand and is not available to purchase from any
other manufacturer.

Selected Validation Data



Immunofluorescent analysis of (-20°C Ethanol) fixed HeLa cells using CoraLite® Plus 488-conjugated NTF2 antibody (CL488-66063, Clone: 4H7F9) at dilution of 1:200, CL594-Phalloidin (red).