

For Research Use Only

CoraLite® Plus 488-conjugated Caveolin-1 Monoclonal antibody

Catalog Number: CL488-66067

Featured Product

1 Publications



Basic Information

Catalog Number:

CL488-66067

Size:

100ul, Concentration: 1000 ug/ml by

Nanodrop;

Source:

Mouse

Isotype:

IgG1

Immunogen Catalog Number:

AG8049

GenBank Accession Number:

BC006432

GeneID (NCBI):

857

UNIPROT ID:

Q03135

Full Name:

caveolin 1, caveolae protein, 22kDa

Calculated MW:

22 kDa

Observed MW:

20-25 kDa

Purification Method:

Protein G purification

CloneNo.:

6C2B2

Recommended Dilutions:

IF-P 1:50-1:500

Excitation/Emission maxima

wavelengths:

493 nm / 522 nm

Applications

Tested Applications:

IF-P, FC (Intra)

Cited Applications:

IF

Species Specificity:

human, mouse, rat, pig

Positive Controls:

IF-P: human liver cancer tissue, human skin cancer tissue

Background Information

Caveolin-1 (CAV1), a multifunctional protein, is the main constituent molecule of caveolae and represents a scaffolding molecule for several signaling molecules including epidermal growth factor receptor (PMID: 19641024). Several studies have implicated that a reduced expression of CAV1 was found in cancers including head and neck carcinoma (PMID: 19002186). However, other studies recognize CAV1 as a tumor promoter because CAV1 is overexpressed in various kinds of cancers, especially in oral cancer (PMID: 20558341). Recent study also show that CAV1 is involved in gastric Cancer (PMID: 25339030).

Notable Publications

Author	Pubmed ID	Journal	Application
Mariluz Soula	39112706	Nature	IF

Storage

Storage:

Store at -20°C. Avoid exposure to light. Stable for one year after shipment.

Storage Buffer:

PBS with 50% Glycerol, 0.05% Proclin300, 0.5% BSA, pH 7.3.

Aliquoting is unnecessary for -20°C storage

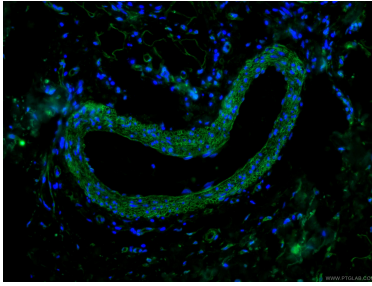
For technical support and original validation data for this product please contact:

T: 1 (888) 4PTGLAB (1-888-478-4522) (toll free in USA), or 1(312) 455-8498 (outside USA)

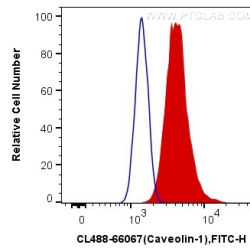
E: proteintech@ptglab.com
W: ptglab.com

This product is exclusively available under Proteintech Group brand and is not available to purchase from any other manufacturer.

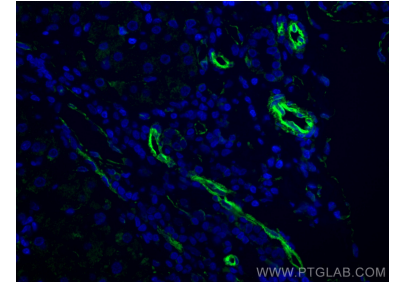
Selected Validation Data



Immunofluorescent analysis of (4% PFA) fixed human skin cancer tissue using CL488-66067 (Caveolin-1 antibody) at dilution of 1:100.



1X10⁶ HeLa cells were intracellularly stained with 0.4 ug CoraLite® Plus 488 Anti-Human Caveolin-1 (CL488-66067, Clone:6C2B2) (red), or 0.4 ug Mouse IgG1 Isotype Control (CL488-66360, Clone: T1F8D3F10) (blue). Cells were fixed with 4% PFA and permeabilized with Flow Cytometry Perm Buffer (PF00011-C).



Immunofluorescent analysis of (4% PFA) fixed human liver cancer tissue using CoraLite® Plus 488 Caveolin-1 antibody (CL488-66067, Clone: 6C2B2) at dilution of 1:200.