

For Research Use Only

CoraLite® Plus 488-conjugated Integrin Alpha 3 Monoclonal antibody



Catalog Number: CL488-66070

Featured Product

Basic Information

Catalog Number: CL488-66070	GenBank Accession Number: BC150190	Purification Method: Protein A purification
Size: 100ul , Concentration: 1000 µg/ml by Nanodrop;	GeneID (NCBI): 3675	CloneNo.: 3F9G4
Source: Mouse	Full Name: integrin, alpha 3 (antigen CD49C, alpha 3 subunit of VLA-3 receptor)	Recommended Dilutions: WB 1:500-1:1000
Isotype: IgG2a	Calculated MW: 1066 aa, 119 kDa	Excitation/Emission maxima wavelengths: 493 nm / 522 nm
Immunogen Catalog Number: AG17293	Observed MW: 120-140 kDa	

Applications

Tested Applications: WB	Positive Controls: WB : A549 cells, PC-3 cells
Species Specificity: human, pig, mouse	

Background Information

ITGA3, also named as MSK18, CD49c, GAPB3 and FRP-2, belongs to the integrin alpha chain family. It is a receptor for fibronectin, laminin, collagen, epiligrin, thrombospondin and CSPG4. ITGA3 may mediate with LGALS3 the stimulation by CSPG4 of endothelial cells migration. ITGA3 is highly concentrated in epithelial cells where it strongly adheres to Laminin-5 and Laminin-5 induced rapid adhesion can be blocked by antibodies against the alpha-3 integrin subunit. It can be cleaved into heavy chain(840aa) and light chain(176aa). This antibody can recognize the heavy chain.

Storage

Storage:
Store at -20°C. Avoid exposure to light. Stable for one year after shipment.
Storage Buffer:
PBS with 50% Glycerol, 0.05% Proclin300, 0.5% BSA, pH 7.3.
Aliquoting is unnecessary for -20°C storage

*** 20ul sizes contain 0.1% BSA

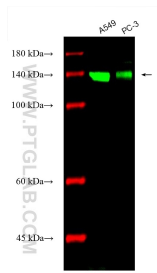
For technical support and original validation data for this product please contact:

T: 1 (888) 4PTGLAB (1-888-478-4522) (toll free
in USA), or 1(312) 455-8498 (outside USA)

E: proteintech@ptglab.com
W: ptglab.com

This product is exclusively available under Proteintech Group brand and is not available to purchase from any other manufacturer.

Selected Validation Data



Various lysates were subjected to SDS PAGE followed by western blot with CL488-66070 (Integrin Alpha 3 antibody) at dilution of 1:500 incubated at room temperature for 1.5 hours.