

For Research Use Only



CoraLite® Plus 488-conjugated Apolipoprotein H Monoclonal antibody

Catalog Number: **CL488-66074**

Basic Information

Catalog Number: CL488-66074	GenBank Accession Number: BC026283	Purification Method: Protein G purification
Size: 100ul , Concentration: 1000 µg/ml by Nanodrop;	GeneID (NCBI): 350	CloneNo.: 4D9A4
Source: Mouse	Full Name: apolipoprotein H (beta-2-glycoprotein I)	Recommended Dilutions: 1:50-1:500
Isotype: IgG1	Calculated MW: 345 aa, 38 kDa	Excitation/Emission maxima wavelengths: 493 nm / 522 nm
Immunogen Catalog Number: AG17915	Observed MW: 50-53 kDa	

Applications

Tested Applications: IF	Positive Controls: IF : HepG2 cells, human liver cancer tissue
Species Specificity: human, mouse, rat, pig	

Background Information

Apolipoprotein H (ApoH), also known as beta2-glycoprotein I (B2-GPI), is a plasma glycoprotein, primarily synthesized in the liver. It has an important function in blood coagulation and clearance of apoptotic bodies from the circulation. ApoH is also an important actor of host innate immune response through its capacity to bind with high affinity to a large panel of pathogens or their proteins.

Storage

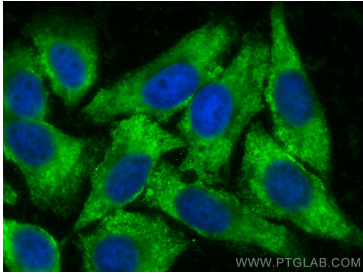
Storage:
Store at -20°C. Avoid exposure to light. Stable for one year after shipment.
Storage Buffer:
PBS with 50% Glycerol, 0.05% Proclin300, 0.5% BSA, pH 7.3.
Aliquoting is unnecessary for -20°C storage

*** 20ul sizes contain 0.1% BSA

For technical support and original validation data for this product please contact:
T: 1 (888) 4PTGLAB (1-888-478-4522) (toll free in USA), or 1(312) 455-8498 (outside USA)
E: proteintech@ptglab.com
W: ptglab.com

This product is exclusively available under Proteintech Group brand and is not available to purchase from any other manufacturer.

Selected Validation Data



Immunofluorescent analysis of (-20°C Ethanol) fixed HepG2 cells using CoraLite® Plus 488 Apolipoprotein H antibody (CL488-66074, Clone: 4D9A4) at dilution of 1:200.