

For Research Use Only

CoraLite® Plus 488-conjugated Serum amyloid P component Monoclonal antibody



Catalog Number: **CL488-66084**

Basic Information

Catalog Number: CL488-66084	GenBank Accession Number: BC007058	Purification Method: Protein A purification
Size: 100ul , Concentration: 1000 µg/ml by Nanodrop;	GeneID (NCBI): 325	CloneNo.: 1A1D10
Source: Mouse	Full Name: amyloid P component, serum	Recommended Dilutions: IF 1:50-1:500
Isotype: IgG2b	Calculated MW: 223 aa, 25 kDa	
Immunogen Catalog Number: AG14957	Observed MW: 27 kDa	

Applications

Tested Applications:

IF

Species Specificity:

human

Positive Controls:

IF : human liver cancer tissue, human liver tissue

Background Information

Serum amyloid P component (SAP), a member of pentraxin family, is a constitutive serum protein that is synthesized by hepatocytes. It is an acute phase protein, structurally related to C-reactive protein. SAP is a calcium-dependent ligand binding protein, which can interact with DNA and histones and may scavenge nuclear material released from damaged circulating cells.

Storage

Storage:

Store at -20°C. Avoid exposure to light. Stable for one year after shipment.

Storage Buffer:

PBS with 50% Glycerol, 0.05% Proclin300, 0.5% BSA, pH 7.3.

Aliquoting is unnecessary for -20°C storage

***** 20ul sizes contain 0.1% BSA**

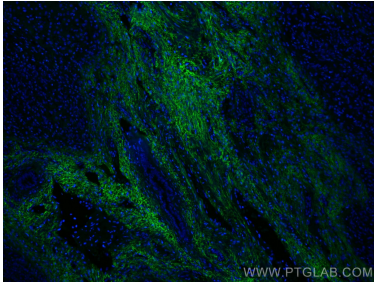
For technical support and original validation data for this product please contact:

T: 1 (888) 4PTGLAB (1-888-478-4522) (toll free
in USA), or 1(312) 455-8498 (outside USA)

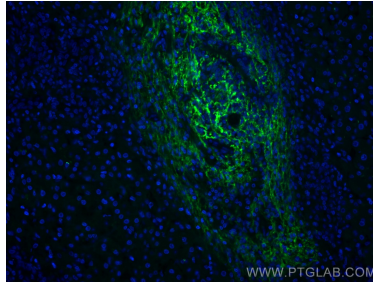
E: proteintech@ptglab.com
W: ptglab.com

This product is exclusively available under Proteintech Group brand and is not available to purchase from any other manufacturer.

Selected Validation Data



Immunofluorescent analysis of (4% PFA) fixed human liver cancer tissue using CoraLite® Plus 488 Serum amyloid P component antibody (CL488-66084, Clone: 1A1D10) at dilution of 1:200.



Immunofluorescent analysis of (4% PFA) fixed human liver cancer tissue using CoraLite® Plus 488 Serum amyloid P component antibody (CL488-66084, Clone: 1A1D10) at dilution of 1:200.