

For Research Use Only

CoraLite® Plus 488-conjugated NCALD Monoclonal antibody

Catalog Number: CL488-66088



Basic Information

Catalog Number: CL488-66088	GenBank Accession Number: BC036098	Purification Method: Protein A purification
Size: 100ul , Concentration: 1000 ug/ml by Nanodrop;	GeneID (NCBI): 83988	CloneNo.: 6B4E10
Source: Mouse	UNIPROT ID: P61601	Recommended Dilutions: IF/ICC 1:50-1:500
Isotype: IgG2a	Full Name: neurocalcin delta	Excitation/Emission maxima wavelengths: 493 nm / 522 nm
Immunogen Catalog Number: AG18760	Calculated MW: 193 aa, 22 kDa	

Applications

Tested Applications: IF/ICC	Positive Controls: IF/ICC : HeLa cells,
Species Specificity: human, mouse, pig	

Background Information

NCALD(Neurocalcin-delta) is a member of the EF-hand calcium-binding protein superfamily. It may be involved in the calcium-dependent regulation of rhodopsin phosphorylation. It is a high-affinity Ca^{2+} sensor (Kd of approx. 0.6 uM), which is most abundantly expressed in the Purkinje cells of the cerebellum (PMID:11964161). This antibody is specific to NCALD.

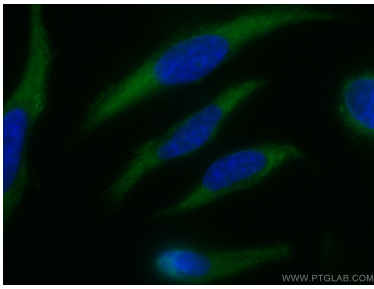
Storage

Storage:
Store at -20°C. Avoid exposure to light. Stable for one year after shipment.
Storage Buffer:
PBS with 50% Glycerol, 0.05% Proclin300, 0.5% BSA, pH 7.3.
Aliquoting is unnecessary for -20°C storage

For technical support and original validation data for this product please contact:
T: 1 (888) 4PTGLAB (1-888-478-4522) (toll free in USA), or 1(312) 455-8498 (outside USA)
E: proteintech@ptglab.com
W: ptglab.com

This product is exclusively available under Proteintech Group brand and is not available to purchase from any other manufacturer.

Selected Validation Data



Immunofluorescent analysis of (-20°C Methanol) fixed HeLa cells using CoraLite® Plus 488 NCALD antibody (CL488-66088, Clone: 6B4E10) at dilution of 1:100.