

For Research Use Only



CoraLite® Plus 488-conjugated Caspase 8/P43/P18 Monoclonal antibody

Catalog Number: **CL488-66093**

Featured Product

Basic Information

Catalog Number:	GenBank Accession Number:	Purification Method:
CL488-66093	BC028223	Protein A purification
Size:	GeneID (NCBI):	CloneNo.:
100ul , Concentration: 1000 ug/ml by Nanodrop;	841	2B9H8
Source:	UNIPROT ID:	Recommended Dilutions:
Mouse	Q14790	IF/ICC 1:50-1:500
Isotype:	Full Name:	Excitation/Emission maxima wavelengths:
IgG2b	caspase 8, apoptosis-related cysteine peptidase	493 nm / 522 nm
Immunogen Catalog Number:	Calculated MW:	
AG20524	538 aa, 62 kDa	
	Observed MW:	
	53-57 kDa, 32-45 kDa, 18 kDa	

Applications

Tested Applications:	Positive Controls:
IF/ICC	IF/ICC : HeLa cells,
Species Specificity:	
human	

Background Information

Caspase 8, also named as MCH5, MACH, FLICE, and CAP4, belongs to the peptidase C14A family. It may participate in the GZMB apoptotic pathways and functions as an upstream regulator in a-bisabolol-induced apoptosis. Caspase 8 catalyzes an essential intermediate step in the ubiquitination and proteasome-mediated degradation of IRF3 (PMID:21816816). It may control diabetic embryopathy-associated apoptosis via regulation of the Bid-stimulated mitochondrion/caspase-9 pathway (PMID:19194987). Caspase 8 is expressed as nine isoforms by alternative splicing with the molecular mass from 26 kDa to 62 kDa. This antibody can recognize pro- and cleaved-caspase 8.

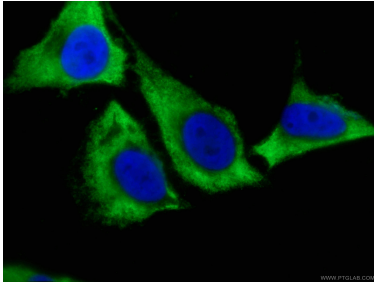
Storage

Storage:
Store at -20°C. Avoid exposure to light. Stable for one year after shipment.
Storage Buffer:
PBS with 50% Glycerol, 0.05% Proclin300, 0.5% BSA, pH 7.3.
Aliquoting is unnecessary for -20°C storage

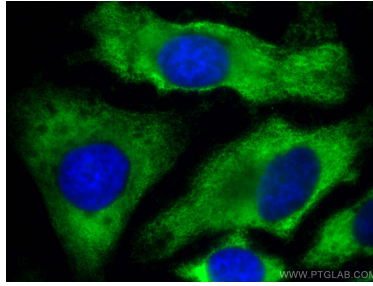
For technical support and original validation data for this product please contact:
T: 1 (888) 4PTGLAB (1-888-478-4522) (toll free in USA), or 1(312) 455-8498 (outside USA)
E: proteintech@ptglab.com
W: ptglab.com

This product is exclusively available under Proteintech Group brand and is not available to purchase from any other manufacturer.

Selected Validation Data



Immunofluorescent analysis of (-20°C Ethanol) fixed HeLa cells using CL488-66093 (Caspase 8/P43/P18 antibody) at dilution of 1:100.



Immunofluorescent analysis of (-20°C Ethanol) fixed HeLa cells using CoraLite® Plus 488 Caspase 8/P43/P18 antibody (CL488-66093, Clone: 2B9H8) at dilution of 1:200.