

For Research Use Only

CoraLite® Plus 488-conjugated ORM1/2 Monoclonal antibody

Catalog Number: CL488-66097



Basic Information

Catalog Number:

CL488-66097

Size:

100ul , Concentration: 1000 ug/ml by Nanodrop;

Source:

Mouse

Isotype:

IgG1

Immunogen Catalog Number:

AG19248

GenBank Accession Number:

BC026238

GeneID (NCBI):

5004

UNIPROT ID:

P02763

Full Name:

orosomuroid 1

Calculated MW:

201 aa, 24 kDa

Observed MW:

40-47 kDa

Purification Method:

Protein G purification

CloneNo.:

5F2H7

Recommended Dilutions:

IF-P 1:50-1:500

IF/ICC 1:50-1:500

Excitation/Emission maxima wavelengths:

493 nm / 522 nm

Applications

Tested Applications:

IF/ICC, IF-P, FC (Intra)

Species Specificity:

human, mouse

Positive Controls:

IF-P : mouse liver tissue,

IF/ICC : HepG2 cells, mouse liver tissue

Background Information

Alpha-1-acid glycoprotein 1 (AGP1), also called orosomuroid-1 (ORM1), is a glycoprotein synthesized mostly by hepatocytes and present in human plasma. ORM1 is an acute-phase reactant protein controlled by glucocorticoids, interleukin-1 and interleukin-6, and increase up to 5-50 times upon infection and/or inflammation. Anti-apoptotic effect and role as immunomodulator of ORM have been reported. ORM is an important carrier for synthetic drugs and influences their distribution and availability in the body. This antibody recognizes a band about 44 kDa in human plasma which may be due to the glycosylation of ORM1 or the dimer formation of the protein. This antibody recognizes both ORM1 and ORM2.

Storage

Storage:

Store at -20°C. Avoid exposure to light. Stable for one year after shipment.

Storage Buffer:

PBS with 50% Glycerol, 0.05% Proclin300, 0.5% BSA, pH 7.3.

Aliquoting is unnecessary for -20°C storage

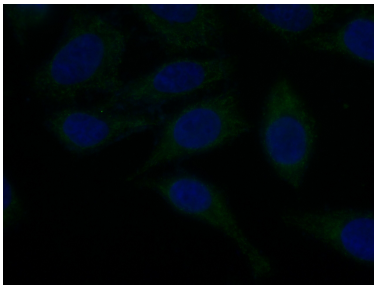
For technical support and original validation data for this product please contact:

T: 1 (888) 4PTGLAB (1-888-478-4522) (toll free in USA), or 1(312) 455-8498 (outside USA)

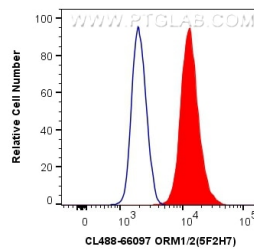
E: proteintech@ptglab.com
W: ptglab.com

This product is exclusively available under Proteintech Group brand and is not available to purchase from any other manufacturer.

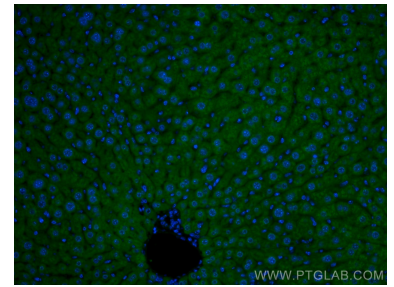
Selected Validation Data



Immunofluorescent analysis of (-20°C Ethanol) fixed HepG2 cells using CL488-66097 (ORM1/2 antibody) at dilution of 1:50.



1X10⁶ HepG2 cells were intracellularly stained with 0.4 ug CoraLite® Plus 488 Anti-Human ORM1/2 (CL488-66097, Clone:5F2H7) (red), or 0.4 ug Isotype Control. Cells were fixed with 4% PFA and permeabilized with Flow Cytometry Perm Buffer (PF00011-C).



Immunofluorescent analysis of (4% PFA) fixed mouse liver tissue using CoraLite® Plus 488 ORM1/2 antibody (CL488-66097, Clone: 5F2H7) at dilution of 1:200.