

For Research Use Only

CoraLite® Plus 488-conjugated S100A6 Monoclonal antibody



Catalog Number: CL488-66098

Basic Information

Catalog Number: CL488-66098	GenBank Accession Number: BC001431	Purification Method: Protein G purification
Size: 100ul , Concentration: 1000 µg/ml by Nanodrop;	GeneID (NCBI): 6277	CloneNo.: 3D11C8
Source: Mouse	Full Name: S100 calcium binding protein A6	Recommended Dilutions: IF 1:50-1:500
Isotype: IgG1	Calculated MW: 10 kDa	Excitation/Emission maxima wavelengths: 493 nm / 522 nm
Immunogen Catalog Number: AG17606	Observed MW: 10 kDa	

Applications

Tested Applications: IF	Positive Controls: IF : HepG2 cells, SH-SY5Y cells
Species Specificity: human	

Background Information

S100A6 is also named as calyculin, prolactin receptor-associated protein (PRA), growth factor-inducible protein 2A9 or MLN4. It belongs to S100 family of low molecular weight, acidic, calcium-binding proteins which contain two EF-hand calcium binding sites. S100A6 may function as a calcium sensor to activate several processes in the calcium signal transduction pathway of cell growth, proliferation, secretion and exocytosis.

Storage

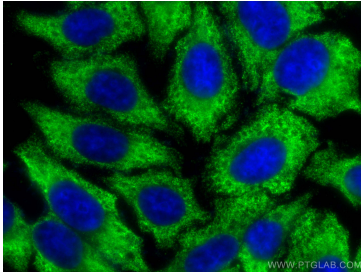
Storage:
Store at -20°C. Avoid exposure to light. Stable for one year after shipment.
Storage Buffer:
PBS with 50% Glycerol, 0.05% Proclin300, 0.5% BSA, pH 7.3.
Aliquoting is unnecessary for -20°C storage

***** 20ul sizes contain 0.1%BSA**

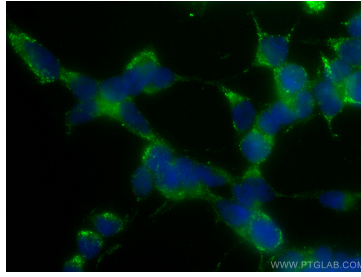
For technical support and original validation data for this product please contact:
T: 1 (888) 4PTGLAB (1-888-478-4522) (toll free in USA), or 1(312) 455-8498 (outside USA)
E: proteintech@ptglab.com
W: ptglab.com

This product is exclusively available under Proteintech Group brand and is not available to purchase from any other manufacturer.

Selected Validation Data



Immunofluorescent analysis of (-20°C Ethanol) fixed HepG2 cells using CoraLite® Plus 488 S100A6 antibody (CL488-66098, Clone: 3D11C8) at dilution of 1:200.



Immunofluorescent analysis of (-20°C Ethanol) fixed SH-SY5Y cells using CoraLite® Plus 488 S100A6 antibody (CL488-66098, Clone: 3D11C8) at dilution of 1:200.