

For Research Use Only

CoraLite®488-conjugated CD22 Monoclonal antibody

Catalog Number:CL488-66103



Basic Information

Catalog Number:

CL488-66103

GenBank Accession Number:

BC109306

Purification Method:

Protein A purification

Size:

100ul , Concentration: 1000 ug/ml by
Nanodrop;

GeneID (NCBI):

933

CloneNo.:

7A2F1

Source:

Mouse

UNIPROT ID:

P20273

Recommended Dilutions:

IF-P 1:50-1:500

Isotype:

IgG2a

Full Name:

CD22 molecule

Excitation/Emission maxima wavelengths:

491 nm / 516 nm

Immunogen Catalog Number:

AG17986

Calculated MW:

847 aa, 95 kDa

Applications

Tested Applications:

IF-P

Positive Controls:

IF-P : human tonsillitis tissue,

Species Specificity:

human

Background Information

CD22, also known as Siglec-2 (sialic acid binding Ig-like lectin 2) or BL-CAM (B-lymphocyte cell adhesion molecule), is a 130-140 kDa, B-cell restricted, type I transmembrane glycoprotein belonging to the immunoglobulin gene superfamily. The expression of CD22 is developmentally regulated. It is expressed at low levels in the cytoplasm of pro-B and pre-B cells and present on the cell surface only at mature stages of B-cell differentiation. Cell surface expression is lost during terminal differentiation into plasma cell and after B-cell activation. CD22 is an inhibitory receptor for B-cell receptor (BCR) signalling, preferentially binds to alpha-2,6-linked sialic acid and mediates B-cell B-cell interactions. It plays a crucial role in activation and differentiation of the B-cell. And this antibody is conjugated with CL488, Ex/Em 488 nm/515 nm.

Storage

Storage:

Store at -20°C. Avoid exposure to light. Stable for one year after shipment.

Storage Buffer:

PBS with 50% Glycerol, 0.05% Proclin300, 0.5% BSA, pH 7.3.

Aliquoting is unnecessary for -20°C storage

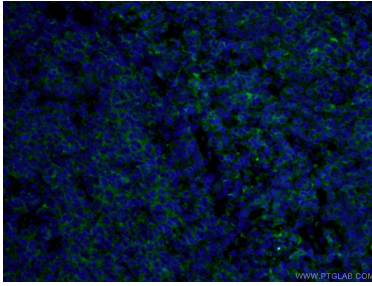
For technical support and original validation data for this product please contact:

T: 1 (888) 4PTGLAB (1-888-478-4522) (toll free
in USA), or 1(312) 455-8498 (outside USA)

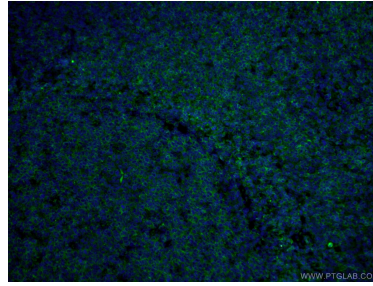
E: proteintech@ptglab.com
W: ptglab.com

This product is exclusively available under Proteintech Group brand and is not available to purchase from any other manufacturer.

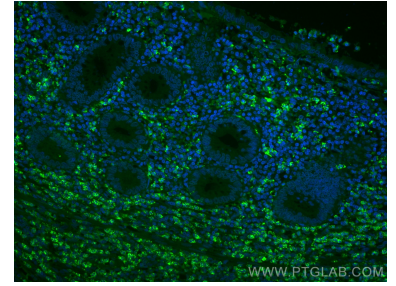
Selected Validation Data



Immunofluorescent analysis of (4% PFA) fixed human tonsillitis tissue using CL488-66103 (CD22 antibody) at dilution of 1:100.



Immunofluorescent analysis of (4% PFA) fixed human tonsillitis tissue using CL488-66103 (CD22 antibody) at dilution of 1:100.



Immunofluorescent analysis of (4% PFA) fixed paraffin-embedded human appendicitis tissue using CoraLite®488 CD22 antibody (CL488-66103, Clone: 7A2F1) at dilution of 1:200. Heat mediated antigen retrieval with Tris-EDTA buffer (pH 9.0).