

For Research Use Only

CoraLite® Plus 488-conjugated RBP4 Monoclonal antibody

Catalog Number:CL488-66104



Basic Information

Catalog Number: CL488-66104	GenBank Accession Number: BC020633	Purification Method: Protein A purification
Size: 100ul , Concentration: 1000 ug/ml by Nanodrop;	GeneID (NCBI): 5950	CloneNo.: 1D12B11
Source: Mouse	UNIPROT ID: P02753	Recommended Dilutions: IF-P 1:50-1:500 IF/ICC 1:50-1:500
Isotype: IgG2a	Full Name: retinol binding protein 4, plasma	Excitation/Emission maxima wavelengths: 493 nm / 522 nm
Immunogen Catalog Number: AG19295	Calculated MW: 201 aa, 23 kDa	
	Observed MW: 23 kDa	

Applications

Tested Applications: IF/ICC, IF-P	Positive Controls: IF-P : human liver cancer tissue, IF/ICC : HepG2 cells,
Species Specificity: human	

Background Information

RBP4 (retinol-binding protein 4) is a carrier protein that transports vitamin A (retinol) from the liver to the peripheral tissues. Synthesized primarily by hepatocytes and adipocytes as a 21 kDa non-glycosylated protein, RBP4 is secreted into the circulation as a retinol-RBP4 complex. In plasma the RBP4-retinol complex is bound to transthyretin (TTR), which prevents prevent kidney filtration. Two truncated forms of RBP4, RBP4-L (truncated at Leu-183) and RBP4-LL (truncated at Leu-182 and Leu-183), exist by proteolytic process. RBP4-L and RBP4-LL, which do not bind TTR, are normally excreted into the urine but accumulate in the serum during renal failure. Urinary RBP4 has been reported as marker for glomerular disease. RBP4 also was identified as an adipokine that elevated in some INS-resistant states. Measurement of serum RBP4 could be used to assess the risk of INS resistance, type 2 diabetes, obesity, and cardiovascular disease. (18752671, 16034410)

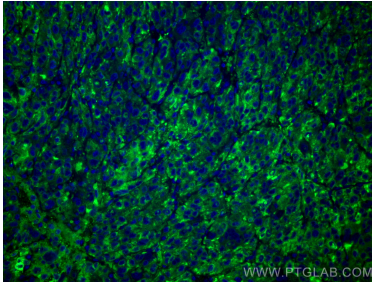
Storage

Storage:
Store at -20°C. Avoid exposure to light. Stable for one year after shipment.
Storage Buffer:
PBS with 50% Glycerol, 0.05% Proclin300, 0.5% BSA, pH 7.3.
Aliquoting is unnecessary for -20°C storage

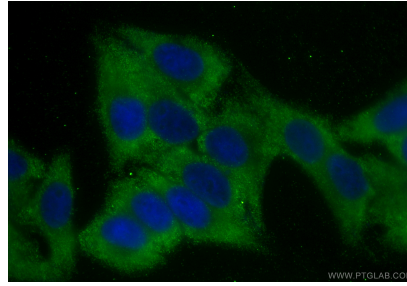
For technical support and original validation data for this product please contact:
T: 1 (888) 4PTGLAB (1-888-478-4522) (toll free in USA), or 1(312) 455-8498 (outside USA)
E: proteintech@ptglab.com
W: ptglab.com

This product is exclusively available under Proteintech Group brand and is not available to purchase from any other manufacturer.

Selected Validation Data



Immunofluorescent analysis of (4% PFA) fixed human liver cancer tissue using CoraLite® Plus 488 RBP4 antibody (CL488-66104, Clone: 1D12B11) at dilution of 1:200.



Immunofluorescent analysis of (-20°C Ethanol) fixed HepG2 cells using CoraLite® Plus 488 RBP4 antibody (CL488-66104, Clone: 1D12B11) at dilution of 1:200.