

For Research Use Only

# CoraLite® Plus 488-conjugated SULT4A1 Monoclonal antibody

Catalog Number: CL488-66106



## Basic Information

<b>Catalog Number:</b> CL488-66106	<b>GenBank Accession Number:</b> BC022459	<b>Purification Method:</b> Protein G purification
<b>Size:</b> 100ul , Concentration: 1000 ug/ml by Nanodrop;	<b>GeneID (NCBI):</b> 25830	<b>CloneNo.:</b> 1B9F6
<b>Source:</b> Mouse	<b>UNIPROT ID:</b> Q9BR01	<b>Recommended Dilutions:</b> IF-P 1:50-1:500
<b>Isotype:</b> IgG1	<b>Full Name:</b> sulfotransferase family 4A, member 1	<b>Excitation/Emission maxima wavelengths:</b> 493 nm / 522 nm
<b>Immunogen Catalog Number:</b> AG17962	<b>Calculated MW:</b> 284 aa, 33 kDa	
	<b>Observed MW:</b> 33 kDa	

## Applications

<b>Tested Applications:</b> IF-P, FC (Intra)	<b>Positive Controls:</b> IF-P : mouse brain tissue,
<b>Species Specificity:</b> human, mouse	

## Background Information

SULT4A1, also named as SULTX3, NST, ST4A1, hBR-STL and hBR-STL-1, belongs to the sulfotransferase 1 family. It may catalyze the sulfate conjugation of many drugs, xenobiotic compounds, hormones, and neurotransmitters. SULT4A1 displays activity towards L-triiodothyronine, thyroxine, estrone, p-nitrophenol, 2-naphtylamine, and 2-naphtol. It may have a role in the sulfation of drugs and neurotransmitters in the CNS. SULT4A1 is a brain-specific sulfotransferase believed to be involved in the metabolism of neurotransmitters. It is a novel cytosolic sulfotransferase that is primarily expressed in the brain.

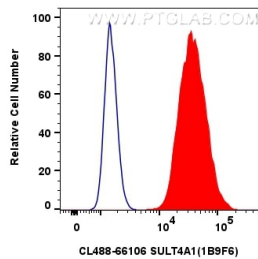
## Storage

**Storage:**  
Store at -20°C. Avoid exposure to light. Stable for one year after shipment.  
**Storage Buffer:**  
PBS with 50% Glycerol, 0.05% Proclin300, 0.5% BSA, pH 7.3.  
**Aliquoting is unnecessary for -20°C storage**

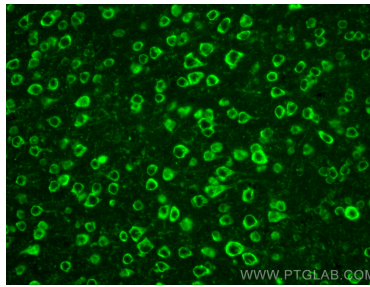
For technical support and original validation data for this product please contact:  
T: 1 (888) 4PTGLAB (1-888-478-4522) (toll free in USA), or 1(312) 455-8498 (outside USA)  
E: [proteintech@ptglab.com](mailto:proteintech@ptglab.com)  
W: [ptglab.com](http://ptglab.com)

This product is exclusively available under Proteintech Group brand and is not available to purchase from any other manufacturer.

## Selected Validation Data



1x10<sup>6</sup> SH-SY5Y cells were intracellularly stained with 0.4  $\mu$ g Coralite® Plus 488 Sult4a1 Monoclonal Antibody (CL488-66106, Clone:1B9F6)(red), or 0.4  $\mu$ g Coralite® Plus 488 Mouse IgG1 Isotype Control (MOPC-21) (CL488-65124, Clone: MOPC-21) (blue). Cells were fixed with 4% PFA and permeabilized with Flow Cytometry Perm Buffer (PF00011-C).



Immunofluorescent analysis of (4% PFA) fixed paraffin-embedded mouse brain tissue using Coralite® Plus 488 SULT4A1 antibody (CL488-66106, Clone: 1B9F6) at dilution of 1:200. Heat mediated antigen retrieval with Tris-EDTA buffer (pH 9.0).