

For Research Use Only

CoraLite® Plus 488-conjugated SMARCD1 Monoclonal antibody

Catalog Number: CL488-66116



Basic Information

Catalog Number: CL488-66116	GenBank Accession Number: BC009368	Purification Method: Protein G purification
Size: 100ul , Concentration: 1000 ug/ml by Nanodrop;	GeneID (NCBI): 6602	CloneNo.: 2F2G6
Source: Mouse	UNIPROT ID: Q96GM5	Recommended Dilutions: WB 1:500-1:1000
Isotype: IgG1	Full Name: SWI/SNF related, matrix associated, actin dependent regulator of chromatin, subfamily d, member 1	Excitation/Emission maxima wavelengths: 493 nm / 522 nm
Immunogen Catalog Number: AG19100	Calculated MW: 58 kDa	
	Observed MW: 58 kDa	

Applications

Tested Applications: WB	Positive Controls: WB : Jurkat cells,
Species Specificity: human	

Background Information

SMARCD1 (SWI/SNF related, matrix associated, actin dependent regulator of chromatin, subfamily d, member 1), also known as BAF60a (BRG1-associated factor 60A), Rsc6p or CRACD1, is a 476 amino acid protein that localizes to the nucleus and contains one SWIB domain. Expressed ubiquitously with notable expression in liver, brain, muscle, lung, kidney, pancreas and placenta, SMARCD1 functions as a component of the BAF complex and, in conjunction with a variety of other proteins, plays an essential role in chromatin remodeling. In addition, SMARCD1 influences vitamin D-mediated transcriptional activity and is thought to provide a link between the vitamin D receptor (VDR) and SWI/SNF chromatin remodeling complexes. Multiple isoforms of BAF60a exist due to alternative splicing events.

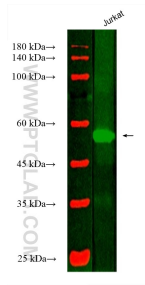
Storage

Storage:
Store at -20°C. Avoid exposure to light. Stable for one year after shipment.
Storage Buffer:
PBS with 50% Glycerol, 0.05% Proclin300, 0.5% BSA, pH 7.3.
Aliquoting is unnecessary for -20°C storage

For technical support and original validation data for this product please contact:
T: 1 (888) 4PTGLAB (1-888-478-4522) (toll free in USA), or 1(312) 455-8498 (outside USA)
E: proteintech@ptglab.com
W: ptglab.com

This product is exclusively available under Proteintech Group brand and is not available to purchase from any other manufacturer.

Selected Validation Data



Various lysates were subjected to SDS PAGE followed by western blot with CL488-66116 (SMARCD1 antibody) at dilution of 1:500 incubated at room temperature for 1.5 hours.