

For Research Use Only

# CoraLite® Plus 488-conjugated RAC1 Monoclonal antibody

Catalog Number: CL488-66122

Featured Product

1 Publications



## Basic Information

Catalog Number:

CL488-66122

Size:

100ul , Concentration: 1000 ug/ml by Nanodrop;

Source:

Mouse

Isotype:

IgG2b

Immunogen Catalog Number:

AG17779

GenBank Accession Number:

BC004247

GeneID (NCBI):

5879

UNIPROT ID:

P63000

Full Name:

ras-related C3 botulinum toxin substrate 1 (rho family, small GTP binding protein Rac1)

Calculated MW:

21 kDa

Observed MW:

21 kDa

Purification Method:

Protein A purification

CloneNo.:

4A4B11

Recommended Dilutions:

IF/ICC 1:50-1:500

Excitation/Emission maxima wavelengths:

493 nm / 522 nm

## Applications

Tested Applications:

IF/ICC

Cited Applications:

IF

Species Specificity:

human, mouse, rat

Cited Species:

human

Positive Controls:

IF/ICC : HeLa cells,

## Background Information

RAC1b, also named as TC25, belongs to the small GTPase superfamily and Rho family. RAC1 is a plasma membrane-associated small GTPase which cycles between active GTP-bound and inactive GDP-bound states. In its active state, it binds to a variety of effector proteins to regulate cellular responses such as secretory processes, phagocytosis of apoptotic cells, epithelial cell polarization and growth-factor induced formation of membrane ruffles.

## Notable Publications

Author	Pubmed ID	Journal	Application
Huiyi Tang	33122632	Cell Death Dis	IF

## Storage

Storage:

Store at -20°C. Avoid exposure to light. Stable for one year after shipment.

Storage Buffer:

PBS with 50% Glycerol, 0.05% Proclin300, 0.5% BSA, pH 7.3.

Aliquoting is unnecessary for -20°C storage

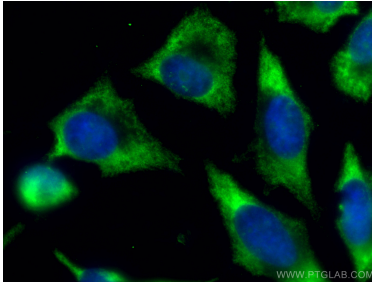
For technical support and original validation data for this product please contact:

T: 1 (888) 4PTGLAB (1-888-478-4522) (toll free in USA), or 1(312) 455-8498 (outside USA)

E: [proteintech@ptglab.com](mailto:proteintech@ptglab.com)  
W: [ptglab.com](http://ptglab.com)

This product is exclusively available under Proteintech Group brand and is not available to purchase from any other manufacturer.

## Selected Validation Data



Immunofluorescent analysis of (-20°C Ethanol) fixed HeLa cells using Coralite® Plus 488-conjugated RAC1 antibody (CL488-66122, Clone: 4A4B11 ) at dilution of 1:100.