

For Research Use Only

CoraLite® Plus 488-conjugated Alpha-2-Macroglobulin Monoclonal antibody

Catalog Number:CL488-66126



Basic Information

Catalog Number: CL488-66126	GenBank Accession Number: BC040071	Purification Method: Protein A purification
Size: 100ul , Concentration: 1000 ug/ml by 2 Nanodrop;	GeneID (NCBI): UNIPROT ID:	CloneNo.: 4B11F7
Source: Mouse	P01023	Recommended Dilutions: IF/ICC 1:50-1:500
Isotype: IgG2a	Full Name: alpha-2-macroglobulin	Excitation/Emission maxima wavelengths: 493 nm / 522 nm
Immunogen Catalog Number: AG19245	Calculated MW: 1474 aa, 163 kDa	

Applications

Tested Applications: IF/ICC	Positive Controls: IF/ICC : HepG2 cells,
Species Specificity: human	

Background Information

alpha-2-macroglobulin, also known as α2-macroglobulin (α2M and A2M), is a protein abundant in the plasma of vertebrates and several invertebrates. A2M is an evolutionarily conserved arm of the innate immune system. It also mediates the proliferation of T cells and macrophages. A2M acts as a nonspecific protease inhibitor involved in the host defense mechanism that inactivates both endogenous and exogenous proteases, including trypsin, thrombin and collagenase. Even though A2M is produced predominantly by the liver, it may also be expressed in the reproductive tract, heart, and brain, and may have important roles in many physiological processes and medical illnesses including Alzheimer's disease.

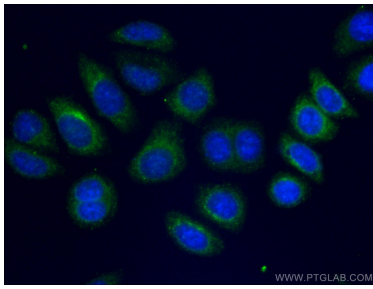
Storage

Storage:
Store at -20°C. Avoid exposure to light. Stable for one year after shipment.
Storage Buffer:
PBS with 50% Glycerol, 0.05% Proclin300, 0.5% BSA, pH 7.3.
Aliquoting is unnecessary for -20°C storage

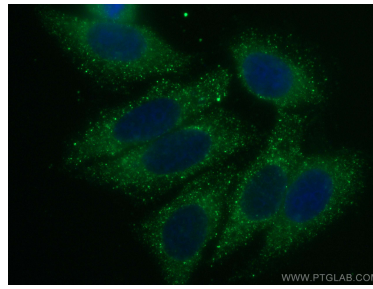
For technical support and original validation data for this product please contact:
T: 1 (888) 4PTGLAB (1-888-478-4522) (toll free in USA), or 1(312) 455-8498 (outside USA)
E: proteintech@ptglab.com
W: ptglab.com

This product is exclusively available under Proteintech Group brand and is not available to purchase from any other manufacturer.

Selected Validation Data



Immunofluorescent analysis of (-20°C Ethanol) fixed HepG2 cells using CL488-66126 (Alpha-2-macroglobulin antibody) at dilution of 1:100.



Immunofluorescent analysis of (-20°C Ethanol) fixed HepG2 cells using CoraLite® Plus 488 Alpha-2-Macroglobulin antibody (CL488-66126, Clone: 4B11F7) at dilution of 1:200.