

For Research Use Only

CoraLite® Plus 488-conjugated RBPJ Monoclonal antibody



Catalog Number: **CL488-66132**

Featured Product

Basic Information

Catalog Number: CL488-66132	GenBank Accession Number: BC064976	Purification Method: Protein G purification
Size: 100ul , Concentration: 1000 µg/ml by Nanodrop;	GeneID (NCBI): 3516	CloneNo.: 2F12G12
Source: Mouse	Full Name: recombination signal binding protein for immunoglobulin kappa J region	Excitation/Emission maxima wavelengths: 488 nm / 515 nm
Isotype: IgG1	Calculated MW: 56 kDa	
Immunogen Catalog Number: AG6302	Observed MW: 60 kDa	

Applications

Tested Applications:
FC (Intra)
Species Specificity:
human

Background Information

Storage

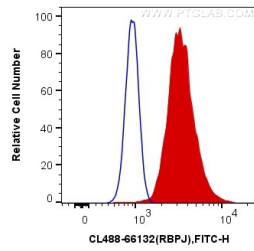
Storage:
Store at -20°C. Avoid exposure to light. Stable for one year after shipment.
Storage Buffer:
PBS with 50% Glycerol, 0.05% Proclin300, 0.5% BSA, pH 7.3.
Aliquoting is unnecessary for -20°C storage

*** 20ul sizes contain 0.1% BSA

For technical support and original validation data for this product please contact:
T: 1 (888) 4PTGLAB (1-888-478-4522) (toll free in USA), or 1(312) 455-8498 (outside USA)
E: proteintech@ptglab.com
W: ptglab.com

This product is exclusively available under Proteintech Group brand and is not available to purchase from any other manufacturer.

Selected Validation Data



1X10⁶ HeLa cells were intracellularly stained with 0.4 ug Coralite® Plus 488 Anti-Human RBPJ (CL488-66132, Clone:2F12G12) (red), or 0.4 ug Control Antibody. Cells were fixed and permeabilized with Transcription Factor Staining Buffer Kit (PF00011).