

For Research Use Only

CoraLite® Plus 488-conjugated IL-17D Monoclonal antibody

Catalog Number:CL488-66143



Basic Information

Catalog Number:

CL488-66143

Size:

100ul , Concentration: 1000 ug/ml by
Nanodrop;

Source:

Mouse

Isotype:

IgG2b

Immunogen Catalog Number:

AG6762

GenBank Accession Number:

BC036243

GeneID (NCBI):

53342

UNIPROT ID:

Q8TAD2

Full Name:

interleukin 17D

Calculated MW:

22 kDa

Observed MW:

28 kDa

Purification Method:

Protein A purification

CloneNo.:

1D7H4

Excitation/Emission maxima
wavelengths:

493 nm / 522 nm

Applications

Tested Applications:

FC (Intra)

Species Specificity:

human

Background Information

IL17D is a secreted cytokine with homology to the IL-17 family of proteins. IL17D is preferentially expressed in skeletal muscle, brain, adipose tissue, heart, lung, and pancreas. The treatment of endothelial cells with IL17D has been shown to stimulate the production of other cytokines including IL6, IL8 and CSF2/ GM-CSF. The increased expression of IL8 induced by IL17D was found to be NF-kappa B-dependent.

Storage

Storage:

Store at -20°C. Avoid exposure to light. Stable for one year after shipment.

Storage Buffer:

PBS with 50% Glycerol, 0.05% Proclin300, 0.5% BSA, pH 7.3.

Aliquoting is unnecessary for -20°C storage

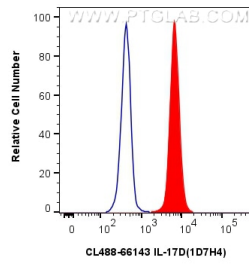
For technical support and original validation data for this product please contact:

T: 1 (888) 4PTGLAB (1-888-478-4522) (toll free
in USA), or 1(312) 455-8498 (outside USA)

E: proteintech@ptglab.com
W: ptglab.com

This product is exclusively available under Proteintech
Group brand and is not available to purchase from any
other manufacturer.

Selected Validation Data



1x10⁶ human PBMCs were intracellularly stained with 0.25 ug CoraLite® Plus 488-conjugated IL-17D Monoclonal antibody (CL488-66143, Clone: 1D7H4) (red) or 0.25 ug CoraLite® Plus 488 Mouse IgG2b isotype control (11B8C4) (CL488-66360-3, Clone: 11B8C4) (blue). Cells were fixed with 4% PFA and permeabilized with Flow Cytometry Perm Buffer (PF00011-C).