

For Research Use Only



# CoraLite® Plus 488-conjugated Complement factor B Monoclonal antibody

Catalog Number: **CL488-66154**

## Basic Information

<b>Catalog Number:</b> CL488-66154	<b>GenBank Accession Number:</b> BC007990	<b>Purification Method:</b> Thiophilic affinity chromatograph
<b>Size:</b> 100ul , Concentration: 1000 µg/ml by Nanodrop;	<b>GeneID (NCBI):</b> 629	<b>CloneNo.:</b> 8D2B6
<b>Source:</b> Mouse	<b>Full Name:</b> complement factor B	<b>Recommended Dilutions:</b> IF 1:50-1:500
<b>Isotype:</b> IgM	<b>Calculated MW:</b> 86 kDa	
<b>Immunogen Catalog Number:</b> AG19107	<b>Observed MW:</b> 93 kDa	

## Applications

<b>Tested Applications:</b> IF	<b>Positive Controls:</b> IF : human liver tissue,
<b>Species Specificity:</b> human	

## Background Information

Complement factor B (CFB) is a component of the alternative pathway of complement activation. Complement factor B is cleaved into Ba and Bb by factor D in the presence of C3b. The active subunit Bb is a serine protease which associates with C3b to form the alternative pathway C3 convertase. Bb is involved in the proliferation of preactivated B lymphocytes, while Ba inhibits their proliferation.

## Storage

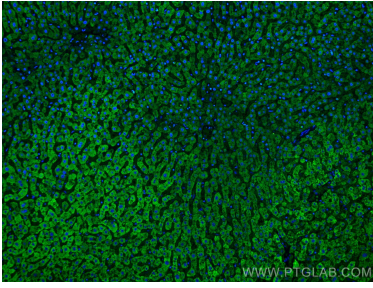
**Storage:**  
Store at -20°C. Avoid exposure to light. Stable for one year after shipment.  
**Storage Buffer:**  
PBS with 50% Glycerol, 0.05% Proclin300, 0.5% BSA, pH 7.3.  
Aliquoting is unnecessary for -20°C storage

**\*\*\* 20ul sizes contain 0.1% BSA**

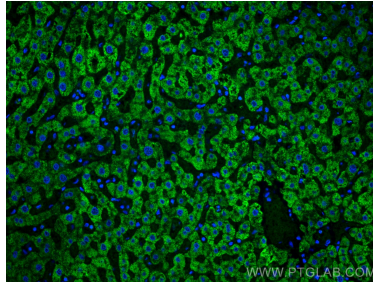
For technical support and original validation data for this product please contact:  
T: 1 (888) 4PTGLAB (1-888-478-4522) (toll free in USA), or 1(312) 455-8498 (outside USA)      E: proteintech@ptglab.com  
W: ptglab.com

**This product is exclusively available under Proteintech Group brand and is not available to purchase from any other manufacturer.**

## Selected Validation Data



Immunofluorescent analysis of (4% PFA) fixed human liver tissue using CoralLite® Plus 488 Complement factor B antibody (CL488-66154, Clone: 8D2B6 ) at dilution of 1:200.



Immunofluorescent analysis of (4% PFA) fixed human liver tissue using CoralLite® Plus 488 Complement factor B antibody (CL488-66154, Clone: 8D2B6 ) at dilution of 1:200.