

For Research Use Only

CoraLite® Plus 488-conjugated C3/C3b/C3c Monoclonal antibody

Catalog Number:CL488-66157



Basic Information

Catalog Number:

CL488-66157

Size:

100ul , Concentration: 1000 ug/ml by
Nanodrop;

Source:

Mouse

Isotype:

IgG1

Immunogen Catalog Number:

AG15955

GenBank Accession Number:

BC150179

GeneID (NCBI):

718

UNIPROT ID:

P01024

Full Name:

complement component 3

Calculated MW:

1663 aa, 187 kDa

Observed MW:

115 kDa

Purification Method:

Protein G purification

CloneNo.:

2A6B3

Recommended Dilutions:

IF/ICC 1:50-1:500

Excitation/Emission maxima wavelengths:

493 nm / 522 nm

Applications

Tested Applications:

IF/ICC

Species Specificity:

human

Positive Controls:

IF/ICC : HepG2 cells,

Background Information

The complement system is an important effector which bridges the innate and adaptive immune systems (PMID: 20010915). The third component of complement, C3, plays a central role in the activation of the complement system. Its processing by C3 convertase is the central reaction in both classical and alternative complement pathways (PMID: 11414361). Human C3, composed of α and β chains (115 and 75 kDa, respectively), is cleaved into C3a and C3b by C3 convertase. C3b is further cleaved into iC3b, C3c, C3dg and C3f. This antibody raised against 1314-1663 aa of human C3 protein recognize C3 alpha chain, C3b alpha' chain, and C3c alpha' chain fragment 2.

Storage

Storage:

Store at -20°C. Avoid exposure to light. Stable for one year after shipment.

Storage Buffer:

PBS with 50% Glycerol, 0.05% Proclin300, 0.5% BSA, pH 7.3.

Aliquoting is unnecessary for -20°C storage

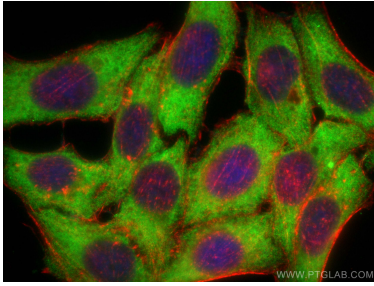
For technical support and original validation data for this product please contact:

T: 1 (888) 4PTGLAB (1-888-478-4522) (toll free
in USA), or 1(312) 455-8498 (outside USA)

E: proteintech@ptglab.com
W: ptglab.com

This product is exclusively available under Proteintech Group brand and is not available to purchase from any other manufacturer.

Selected Validation Data



Immunofluorescent analysis of (-20°C Ethanol)
fixed HepG2 cells using CoraLite® Plus 488
C3/C3b/C3c antibody (CL488-66157, Clone: 2A6B3
) at dilution of 1:200, CL594-phalloidin (red).