

For Research Use Only

CoraLite® Plus 488-conjugated S1 tag Monoclonal antibody



Catalog Number:CL488-66165

Basic Information

Catalog Number: CL488-66165	GenBank Accession Number: GeneID (NCBI):	Purification Method: Protein A purification
Size: 100ul , Concentration: 1000 µg/ml by Nanodrop;	Full Name:	CloneNo.: 1A9B5
Source: Mouse		Recommended Dilutions: WB 1:500-1:1000
Isotype: IgG2b		

Applications

Tested Applications: WB	Positive Controls: WB : Recombinant protein,
Species Specificity: recombinant protein	

Background Information

S1 tag, with sequence NANNPDWDF, is derived from the hepatitis B virus preS1 region. S1 tag is widely used in various protein expression systems. This antibody can detect the over-expressed fusion proteins containing S1 epitope tag.

Storage

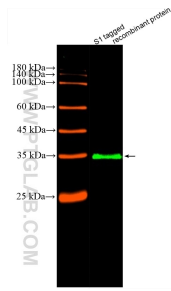
Storage:
Store at -20°C. Avoid exposure to light. Stable for one year after shipment.
Storage Buffer:
PBS with 50% Glycerol, 0.05% Proclin300, 0.5% BSA, pH 7.3.
Aliquoting is unnecessary for -20°C storage

*** 20ul sizes contain 0.1% BSA

For technical support and original validation data for this product please contact:
T: 1 (888) 4PTGLAB (1-888-478-4522) (toll free in USA), or 1(312) 455-8498 (outside USA) E: proteintech@ptglab.com W: ptglab.com

This product is exclusively available under Proteintech Group brand and is not available to purchase from any other manufacturer.

Selected Validation Data



S1 tagged protein lysate was subjected to SDS PAGE followed by western blot with CL488-66165 (S1 tag antibody) at dilution of 1:500 incubated at room temperature for 1.5 hours.