

For Research Use Only

CoraLite® Plus 488-conjugated Transferrin/TF Monoclonal antibody

Catalog Number:CL488-66171



Basic Information

Catalog Number:

CL488-66171

Size:

100ul , Concentration: 1000 ug/ml by
Nanodrop;

Source:

Mouse

Isotype:

IgG1

Immunogen Catalog Number:

AG11668

GenBank Accession Number:

BC059367

GeneID (NCBI):

7018

UNIPROT ID:

P02787

Full Name:

transferrin

Calculated MW:

698 aa, 77 kDa

Observed MW:

77 kDa

Purification Method:

Protein G purification

CloneNo.:

2B4C6

Recommended Dilutions:

IF-P 1:50-1:500

Excitation/Emission maxima
wavelengths:

493 nm / 522 nm

Applications

Tested Applications:

IF-P

Species Specificity:

human

Positive Controls:

IF-P : human liver cancer tissue, human placenta tissue

Background Information

Transferrin(TF) is also named as Beta-1 metal-binding globulin, Siderophilin and belongs to the transferrin family. It is a bilobal iron-binding protein that plays the crucial role of binding ferric iron and keeping it in solution, thereby controlling the levels of this important metal. Serum transferrin may have a further role in stimulating cell proliferation.

Storage

Storage:

Store at -20°C. Avoid exposure to light. Stable for one year after shipment.

Storage Buffer:

PBS with 50% Glycerol, 0.05% Proclin300, 0.5% BSA, pH 7.3.

Aliquoting is unnecessary for -20°C storage

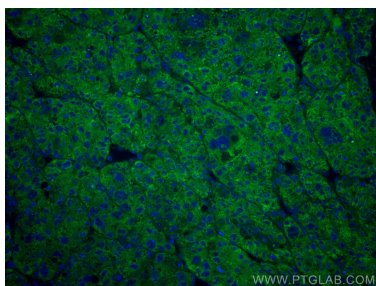
For technical support and original validation data for this product please contact:

T: 1 (888) 4PTGLAB (1-888-478-4522) (toll free
in USA), or 1(312) 455-8498 (outside USA)

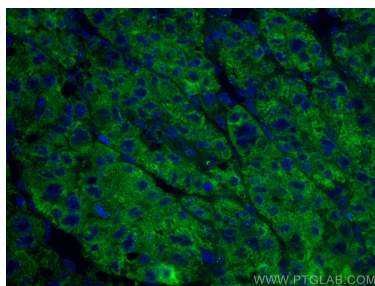
E: proteintech@ptglab.com
W: ptglab.com

This product is exclusively available under Proteintech Group brand and is not available to purchase from any other manufacturer.

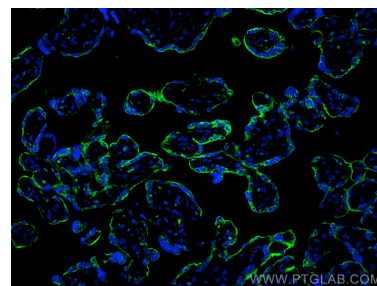
Selected Validation Data



Immunofluorescent analysis of (4% PFA) fixed human liver cancer tissue using CoraLite® Plus 488 Transferrin antibody (CL488-66171, Clone: 2B4C6) at dilution of 1:100.



Immunofluorescent analysis of (4% PFA) fixed human liver cancer tissue using CoraLite® Plus 488 Transferrin antibody (CL488-66171, Clone: 2B4C6) at dilution of 1:100.



Immunofluorescent analysis of (4% PFA) fixed paraffin-embedded human placenta tissue using CoraLite® Plus 488 Transferrin antibody (CL488-66171, Clone: 2B4C6) at dilution of 1:100. Heat mediated antigen retrieval with Tris-EDTA buffer (pH 9.0).