

For Research Use Only

CoraLite® Plus 488-conjugated Vitamin D binding protein Monoclonal antibody

Catalog Number: CL488-66175



Basic Information

Catalog Number: CL488-66175	GenBank Accession Number: BC057228	Purification Method: Protein G purification
Size: 100ul , Concentration: 1000 ug/ml by Nanodrop;	GeneID (NCBI): 2638	CloneNo.: 1E4D10
Source: Mouse	UNIPROT ID: P02774	Recommended Dilutions: IF/ICC 1:50-1:500
Isotype: IgG1	Full Name: group-specific component (vitamin D binding protein)	Excitation/Emission maxima wavelengths: 493 nm / 522 nm
Immunogen Catalog Number: AG9803	Calculated MW: 474 aa, 53 kDa	
	Observed MW: 52-58 kDa	

Applications

Tested Applications: IF/ICC	Positive Controls: IF/ICC : U-937 cells, HepG2 cells
Species Specificity: human	

Background Information

Vitamin D binding protein is a sparsely glycosylated serum protein responsible for highly specific binding and tissue-specific delivery of vitamin D and its metabolites. In addition, it is also an actin scavenger, and is the precursor to the immunomodulatory protein, Gc-MAF. Vitamin D binding protein has been proposed to have significant roles in C5a chemotaxis, osteoclast development and possibly in macrophage activation/recruitment.

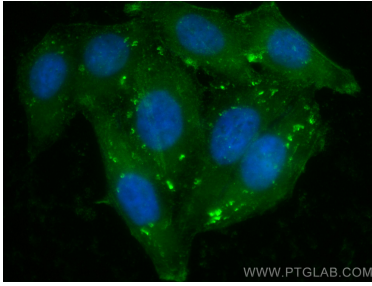
Storage

Storage:
Store at -20°C. Avoid exposure to light. Stable for one year after shipment.
Storage Buffer:
PBS with 50% Glycerol, 0.05% Proclin300, 0.5% BSA, pH 7.3.
Aliquoting is unnecessary for -20°C storage

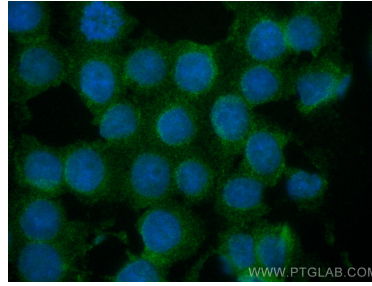
For technical support and original validation data for this product please contact:
T: 1 (888) 4PTGLAB (1-888-478-4522) (toll free in USA), or 1(312) 455-8498 (outside USA)
E: proteintech@ptglab.com
W: ptglab.com

This product is exclusively available under Proteintech Group brand and is not available to purchase from any other manufacturer.

Selected Validation Data



Immunofluorescent analysis of (-20°C Ethanol) fixed HepG2 cells using CoraLite® Plus 488 Vitamin D binding protein antibody (CL488-66175, Clone: 1E4D10) at dilution of 1:200.



Immunofluorescent analysis of (4% PFA) fixed U-937 cells using CoraLite® Plus 488 Vitamin D binding protein antibody (CL488-66175, Clone: 1E4D10) at dilution of 1:100.