

For Research Use Only

CoraLite® Plus 488-conjugated ERK1/2 Monoclonal antibody

Catalog Number: CL488-66192



Basic Information

Catalog Number: CL488-66192	GenBank Accession Number: BC013992	Purification Method: Protein G purification
Size: 100ul , Concentration: 1000 ug/ml by Nanodrop;	GeneID (NCBI): 5595	CloneNo.: 4G8A11
Source: Mouse	UNIPROT ID: P27361	Recommended Dilutions: IF/ICC 1:50-1:500
Isotype: IgG1	Full Name: mitogen-activated protein kinase 3	Excitation/Emission maxima wavelengths: 493 nm / 522 nm
Immunogen Catalog Number: AG20350	Calculated MW: 43 kDa	

Applications

Tested Applications: IF/ICC, FC (Intra)	Positive Controls: IF/ICC : HeLa cells,
Species Specificity: human, mouse	

Background Information

ERK1 and ERK2 belongs to the protein kinase superfamily. It is involved in both the initiation and regulation of meiosis, mitosis, and postmitotic functions in differentiated cells by phosphorylating a number of transcription factors such as ELK-1. ERK1/2 catalyzed the reaction: ATP + a protein = ADP + a phosphoprotein. It is activated by tyrosine phosphorylation in response to INS and NGF. The antibody is conjugated with CL488, Ex/Em 488 nm/515 nm.

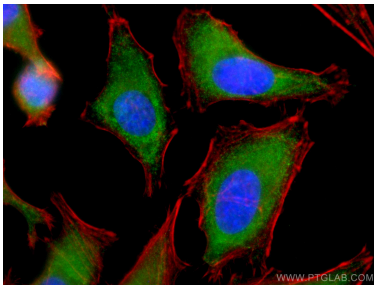
Storage

Storage:
Store at -20°C. Avoid exposure to light. Stable for one year after shipment.
Storage Buffer:
PBS with 50% Glycerol, 0.05% Proclin300, 0.5% BSA, pH 7.3.
Aliquoting is unnecessary for -20°C storage

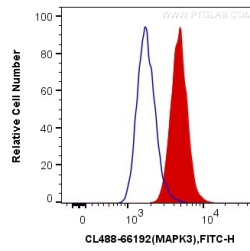
For technical support and original validation data for this product please contact:
T: 1 (888) 4PTGLAB (1-888-478-4522) (toll free in USA), or 1(312) 455-8498 (outside USA)
E: proteintech@ptglab.com
W: ptglab.com

This product is exclusively available under Proteintech Group brand and is not available to purchase from any other manufacturer.

Selected Validation Data



Immunofluorescent analysis of (-20°C Ethanol) fixed HeLa cells using Coralite® Plus 488 ERK1/2 antibody (CL488-66192, Clone: 4G8A11) at dilution of 1:100, (CL594-Phalloidin, red).



1X10⁶ HepG2 cells were intracellularly stained with 0.4 ug Coralite® Plus 488 Anti-Human ERK1/2 (CL488-66192, Clone:4G8A11) (red), or 0.4 ug Mouse IgG1 Isotype Control (CL488-66360, Clone: T1F8D3F10) (blue). Cells were fixed with 4% PFA and permeabilized with Flow Cytometry Perm Buffer (PF00011-C).