

For Research Use Only

CoraLite® Plus 488-conjugated IDH1 Monoclonal antibody

Catalog Number: CL488-66197



Basic Information

Catalog Number:

CL488-66197

Size:

100ul , Concentration: 1000 ug/ml by Nanodrop;

Source:

Mouse

Isotype:

IgG1

Immunogen Catalog Number:

AG19293

GenBank Accession Number:

BC012846

GeneID (NCBI):

3417

UNIPROT ID:

O75874

Full Name:

isocitrate dehydrogenase 1 (NADP+), soluble

Calculated MW:

414 aa, 47 kDa

Observed MW:

46 kDa

Purification Method:

Protein G purification

CloneNo.:

2A6A2

Recommended Dilutions:

IF/ICC 1:50-1:500

Excitation/Emission maxima

wavelengths:

493 nm / 522 nm

Applications

Tested Applications:

IF/ICC, FC (Intra)

Species Specificity:

human

Positive Controls:

IF/ICC : HepG2 cells,

Background Information

IDH1, also named as PICD and IDP, belongs to the isocitrate and isopropylmalate dehydrogenases family. It is a common feature of a major subset of primary human brain cancers. It can form a homodimer(PMID:15173171).IDH1 mutation is always heterozygotic and IDH1 functions as a dimer, theoretically there will be 25% each wild type and mutant homo-dimers and 50% hetero-dimers present in the tumor cells(PMID:21079649).

Storage

Storage:

Store at -20°C. Avoid exposure to light. Stable for one year after shipment.

Storage Buffer:

PBS with 50% Glycerol, 0.05% Proclin300, 0.5% BSA, pH 7.3.

Aliquoting is unnecessary for -20°C storage

For technical support and original validation data for this product please contact:

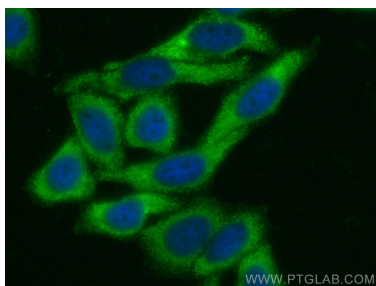
T: 1 (888) 4PTGLAB (1-888-478-4522) (toll free in USA), or 1(312) 455-8498 (outside USA)

E: proteintech@ptglab.com

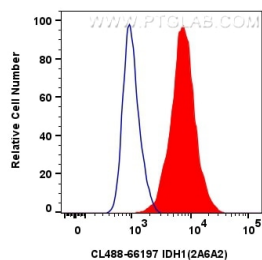
W: ptglab.com

This product is exclusively available under Proteintech Group brand and is not available to purchase from any other manufacturer.

Selected Validation Data



Immunofluorescent analysis of (-20°C Ethanol) fixed HepG2 cells using CoraLite® Plus 488 IDH1 antibody (CL488-66197, Clone: 2A6A2) at dilution of 1:200.



1x10⁶ HepG2 cells were intracellularly stained with 0.4 ug CoraLite® Plus 488-conjugated IDH1 Monoclonal antibody (CL488-66197, Clone:2A6A2) (red), or 0.4 ug CoraLite® Plus 488 Mouse IgG1 Isotype Control (MOPC-21) (CL488-65124, Clone: MOPC-21) (blue). Cells were fixed with 4% PFA and permeabilized with Flow Cytometry Perm Buffer (PF00011-C).