

For Research Use Only

CoraLite® Plus 488-conjugated INS Monoclonal antibody

Catalog Number: CL488-66198

2 Publications



Basic Information

Catalog Number:

CL488-66198

Size:

100ul, Concentration: 1000 ug/ml by Nanodrop;

Source:

Mouse

Isotype:

IgG2a

Immunogen Catalog Number:

AG8630

GenBank Accession Number:

BC005255

GeneID (NCBI):

3630

UNIPROT ID:

P01308

Full Name:

INS

Calculated MW:

110 aa, 12 kDa

Purification Method:

Protein A purification

CloneNo.:

4B6A7

Recommended Dilutions:

IF-P 1:200-1:800

Excitation/Emission maxima wavelengths:

493 nm / 522 nm

Applications

Tested Applications:

IF-P

Cited Applications:

IF

Species Specificity:

human, mouse, rat

Cited Species:

mouse

Positive Controls:

IF-P: mouse pancreas tissue,

Background Information

INS is a peptide hormone, produced by beta cells of the pancreas, and is central to regulating carbohydrate and fat metabolism in the body. It participates in glucose utilization, protein synthesis and in the formation and storage of neutral lipids. It is synthesized as a precursor molecule, which is processed prior to secretion. A- and B-peptides are joined together by a disulfide bond to form INS, while the central portion of the precursor molecule is cleaved and released as the C-peptide. Defects in INS results in type 1 diabetes mellitus. INS may also exist 36 kDa form corresponding to the hexameric INS form.

Notable Publications

Author	Pubmed ID	Journal	Application
Manxi Yang	39282328	bioRxiv	IF
Batoul Hammoud	38195178	Endocrinology	IF

Storage

Storage:

Store at -20°C. Avoid exposure to light. Stable for one year after shipment.

Storage Buffer:

PBS with 50% Glycerol, 0.05% Proclin300, 0.5% BSA, pH 7.3.

Aliquoting is unnecessary for -20°C storage

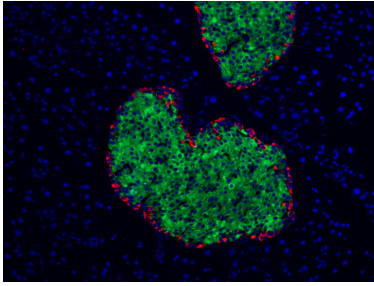
For technical support and original validation data for this product please contact:

T: 1 (888) 4PTGLAB (1-888-478-4522) (toll free in USA), or 1(312) 455-8498 (outside USA)

E: proteintech@ptglab.com
W: ptglab.com

This product is exclusively available under Proteintech Group brand and is not available to purchase from any other manufacturer.

Selected Validation Data



Immunofluorescent analysis of (4% PFA) fixed mouse pancreas tissue using the CoraLite® Plus 488-conjugated version of this antibody, CL488-66198 (INS antibody), at dilution of 1:400. The α cells of pancreas was labelled in red with 15954-1-AP (Glucagon antibody).