

For Research Use Only



# CoraLite®488-conjugated Apolipoprotein A1 Monoclonal antibody

Catalog Number: **CL488-66206**

## Basic Information

<b>Catalog Number:</b> CL488-66206	<b>GenBank Accession Number:</b> BC005380	<b>Purification Method:</b> Protein A purification
<b>Size:</b> 100UL, Concentration: 2000 µg/ml by Bradford method using BSA as the standard;	<b>GeneID (NCBI):</b> 335	<b>CloneNo.:</b> 1C9G5
<b>Source:</b> Mouse	<b>Full Name:</b> apolipoprotein A-I	<b>Recommended Dilutions:</b> IF 1:50-1:500
<b>Isotype:</b> IgG2b	<b>Calculated MW:</b> 31 kDa	<b>Excitation/Emission maxima wavelengths:</b> 488 nm/515 nm
<b>Immunogen Catalog Number:</b> AG21920	<b>Observed MW:</b> 26-28 kDa	

## Applications

<b>Tested Applications:</b> IF, ELISA	<b>Positive Controls:</b> IF : HepG2 cells,
<b>Species Specificity:</b> human, mouse	

## Background Information

ApoA1 is a major protein component of high density lipoproteins (HDL) which is associated with reversed cholesterol transport, lipid/cholesterol binding, lecithin/cholesterol acyltransferase (LCAT) activation and specific receptors binding. It is synthesized in the liver and small intestine. Defects of ApoA1 cause low HDL level and systemic non-neuropathic amyloidosis. Serum concentration of ApoA1 is inversely related to the risk of developing atherosclerosis. This antibody was generated against the C-terminal region of human ApoA1.

## Storage

**Storage:**  
Store at -20°C. Avoid exposure to light. Stable for one year after shipment.  
**Storage Buffer:**  
PBS with 50% Glycerol, 0.05% Proclin300, 0.5% BSA, pH 7.3.  
Aliquoting is unnecessary for -20°C storage

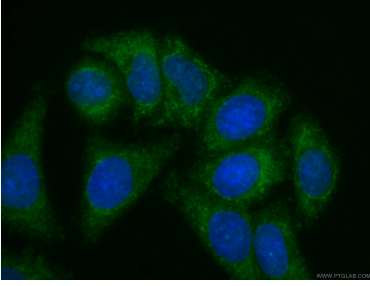
For technical support and original validation data for this product please contact:

T: 1 (888) 4PTGLAB (1-888-478-4522) (toll free  
in USA), or 1(312) 455-8498 (outside USA)

E: [proteintech@ptglab.com](mailto:proteintech@ptglab.com)  
W: [ptglab.com](http://ptglab.com)

This product is exclusively available under Proteintech Group brand and is not available to purchase from any other manufacturer.

## Selected Validation Data



Immunofluorescent analysis of (-20°C Ethanol) fixed HepG2 cells using CL488-66206 (Apolipoprotein A1 antibody) at dilution of 1:100.