

For Research Use Only

CoraLite® Plus 488-conjugated TLE1 Monoclonal antibody



Catalog Number: CL488-66216

Featured Product

Basic Information

Catalog Number: CL488-66216	GenBank Accession Number: BC010100	Purification Method: Protein A purification
Size: 100ul , Concentration: 1000 µg/ml by Nanodrop;	GeneID (NCBI): 7088	CloneNo.: 2F2H11
Source: Mouse	Full Name: transducin-like enhancer of split 1 (E(sp1) homolog, Drosophila)	Recommended Dilutions: IF 1:50-1:500
Isotype: IgG2b	Calculated MW: 83 kDa	Excitation/Emission maxima wavelengths: 493 nm / 522 nm
Immunogen Catalog Number: AG21327	Observed MW: 85-95 kDa	

Applications

Tested Applications: IF	Positive Controls: IF : MCF-7 cells,
Species Specificity: human	

Background Information

Transducin-like enhancer protein 1(TLE1) is a transcriptional corepressor. It can bind to and regress expression of many transcription factors such as NFκB, which is mediated by FOXA2, CTNNB1 and TCF family member in Wnt signaling. The effects of full-length TLE family members may be modulated by association with dominant-negative AES. Expression of TLE1 is highest in skeletal muscle and liver, moderate in placenta, heart, kidney, and spleen, and weak in all other tissues including brain.

Storage

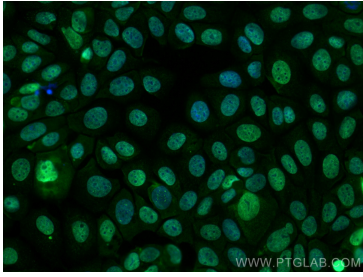
Storage:
Store at -20°C. Avoid exposure to light. Stable for one year after shipment.
Storage Buffer:
PBS with 50% Glycerol, 0.05% Proclin300, 0.5% BSA, pH 7.3.
Aliquoting is unnecessary for -20°C storage

*** 20ul sizes contain 0.1% BSA

For technical support and original validation data for this product please contact:
T: 1 (888) 4PTGLAB (1-888-478-4522) (toll free in USA), or 1(312) 455-8498 (outside USA)
E: proteintech@ptglab.com
W: ptglab.com

This product is exclusively available under Proteintech Group brand and is not available to purchase from any other manufacturer.

Selected Validation Data



Immunofluorescent analysis of (4% PFA) fixed MCF-7 cells using CoraLite® Plus 488 TLE1 antibody (CL488-66216, Clone: 2F2H11) at dilution of 1:200.