

For Research Use Only

CoraLite® Plus 488-conjugated UCH-L1/PGP9.5 Monoclonal antibody

Catalog Number: CL488-66230

Featured Product



Basic Information

Catalog Number:

CL488-66230

Size:

100ul , Concentration: 1000 ug/ml by Nanodrop;

Source:

Mouse

Isotype:

IgG1

Immunogen Catalog Number:

AG6547

GenBank Accession Number:

BC000332

GeneID (NCBI):

7345

UNIPROT ID:

P09936

Full Name:

ubiquitin carboxyl-terminal esterase L1 (ubiquitin thiolesterase)

Calculated MW:

25 kDa

Observed MW:

27 kDa

Purification Method:

Protein G purification

CloneNo.:

1C9E11

Recommended Dilutions:

IF-P 1:50-1:500

IF/ICC 1:50-1:500

Excitation/Emission maxima wavelengths:

493 nm / 522 nm

Applications

Tested Applications:

IF/ICC, IF-P, FC (Intra)

Species Specificity:

human, mouse, rat, pig

Positive Controls:

IF-P : mouse brain tissue,

IF/ICC : SH-SY5Y cells,

Background Information

UCHL1(Ubiquitin carboxyl-terminal hydrolase isozyme L1) is a member of a gene family whose products hydrolyze small C-terminal adducts of ubiquitin to generate the ubiquitin monomer. Expression of UCHL1 is highly specific to neurons and to cells of the diffuse neuroendocrine system and their tumors. It is present in all neurons(PMID: 6343558). This protein is present in brain at concentrations at least 50 times greater than in other organs and is a major protein component of neuronal cytoplasm (PMID:7217993). And UCHL1 is a Parkinson's disease susceptibility gene (PMID:15048890).

Storage

Storage:

Store at -20°C. Avoid exposure to light. Stable for one year after shipment.

Storage Buffer:

PBS with 50% Glycerol, 0.05% Proclin300, 0.5% BSA, pH 7.3.

Aliquoting is unnecessary for -20°C storage

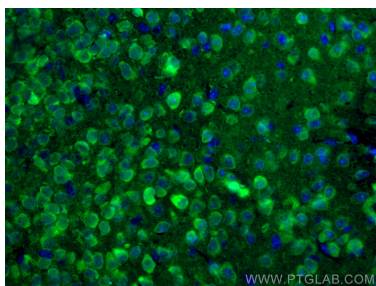
For technical support and original validation data for this product please contact:

T: 1 (888) 4PTGLAB (1-888-478-4522) (toll free in USA), or 1(312) 455-8498 (outside USA)

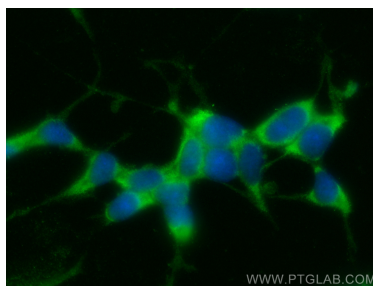
E: proteintech@ptglab.com
W: ptglab.com

This product is exclusively available under Proteintech Group brand and is not available to purchase from any other manufacturer.

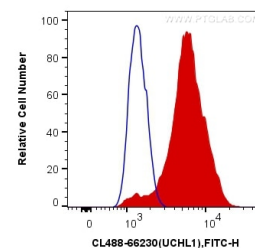
Selected Validation Data



Immunofluorescent analysis of (4% PFA) fixed mouse brain tissue using Coralite® Plus 488 UCHL1/PGP9.5 antibody (CL488-66230, Clone: 1C9E11) at dilution of 1:200.



Immunofluorescent analysis of (-20°C Ethanol) fixed SH-SY5Y cells using Coralite® Plus 488 UCHL1/PGP9.5 antibody (CL488-66230, Clone: 1C9E11) at dilution of 1:200.



1X10⁶ Y79 cells were intracellularly stained with 0.4 ug Coralite® Plus 488 Anti-Human UCHL1/PGP9.5 (CL488-66230, Clone:1C9E11) (red), or 0.4 ug Mouse IgG1 Isotype Control (CL488-66360, Clone: T1F8D3F10) (blue). Cells were fixed with 4% PFA and permeabilized with Flow Cytometry Perm Buffer (PF00011-C).