

For Research Use Only

CoraLite® Plus 488-conjugated Mammaglobin A Monoclonal antibody

Catalog Number: CL488-66237



Basic Information

Catalog Number: CL488-66237	GenBank Accession Number: BC128252	Purification Method: Protein G purification
Size: 100ul , Concentration: 1000 ug/ml by Nanodrop;	GeneID (NCBI): 4250	CloneNo.: 2E5D4
Source: Mouse	UNIPROT ID: Q13296	Recommended Dilutions: IF/ICC 1:50-1:500
Isotype: IgG1	Full Name: secretoglobin, family 2A, member 2	Excitation/Emission maxima wavelengths: 493 nm / 522 nm
Immunogen Catalog Number: AG22485	Calculated MW: 93 aa, 10 kDa	

Applications

Tested Applications: IF/ICC	Positive Controls: IF/ICC : MCF-7 cells,
Species Specificity: human	

Background Information

Mammaglobin A, also known as SCGB2A2, is a member of the secretoglobin superfamily. Mammaglobin A is a breast cancer-associated antigen almost exclusively over-expressed in primary and metastatic human breast cancers, making it a specific molecular marker and a potential therapeutic target for breast cancer. This monoclonal antibody is raised against full-length of 93-amino acid human mammaglobin A.

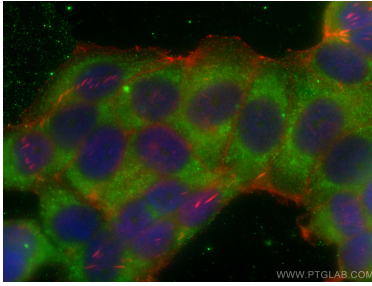
Storage

Storage:
Store at -20°C. Avoid exposure to light. Stable for one year after shipment.
Storage Buffer:
PBS with 50% Glycerol, 0.05% Proclin300, 0.5% BSA, pH 7.3.
Aliquoting is unnecessary for -20°C storage

For technical support and original validation data for this product please contact:
T: 1 (888) 4PTGLAB (1-888-478-4522) (toll free in USA), or 1(312) 455-8498 (outside USA)
E: proteintech@ptglab.com
W: ptglab.com

This product is exclusively available under Proteintech Group brand and is not available to purchase from any other manufacturer.

Selected Validation Data



Immunofluorescent analysis of (-20°C Ethanol)
fixed MCF-7 cells using CoraLite® Plus 488
Mammaglobin A antibody (CL488-66237, Clone:
2E5D4) at dilution of 1:200, CL594-phalloidin (red).