

For Research Use Only

CoraLite® Plus 488-conjugated Beta Tubulin Monoclonal antibody



Catalog Number: **CL488-66240**

8 Publications

Basic Information

Catalog Number: CL488-66240	GenBank Accession Number: BC000748	Purification Method: Protein A purification
Size: 100ul , Concentration: 1000 µg/ml by Nanodrop;	GeneID (NCBI): 10381	CloneNo.: 1D4A4
Source: Mouse	Full Name: tubulin, beta 3	Recommended Dilutions: WB 1:2000-1:10000 IF 1:50-1:500
Isotype: IgG2a	Calculated MW: 450 aa, 50 kDa	Excitation/Emission maxima wavelengths: 493 nm / 522 nm
Immunogen Catalog Number: AG0117		

Applications

Tested Applications: FC (Intra), IF, WB	Positive Controls:
Cited Applications: IF, WB	WB : HeLa cells, HEK-293 cells, HSC-T6 cells, NIH/3T3 cells
Species Specificity: human, mouse, rat, nematode, pig, zebrafish	IF : HepG2 cells,
Cited Species: human, mouse, rat	

Background Information

There are five tubulins in human cells: alpha, beta, gamma, delta, and epsilon. Tubulins are conserved across species. They form heterodimers, which multimerize to form a microtubule filament. An alpha and beta tubulin heterodimer is the basic structural unit of microtubules. The heterodimer does not come apart, once formed. The alpha and beta tubulins, which are each about 55 kDa MW, are homologous but not identical. Alpha and beta tubulins have been widely used as loading controls. Tubulin expression may vary according to resistance to antimicrobial and antimitotic drugs.

Notable Publications

Author	Pubmed ID	Journal	Application
Maria Czarnek	34703654	Mol Ther Nucleic Acids	IF
Xiaomin Tang	34869338	Front Cell Dev Biol	IF
Gaojian Zhang	35372814	iScience	WB

Storage

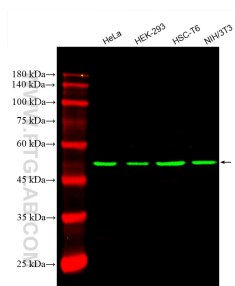
Storage:
Store at -20°C. Avoid exposure to light. Stable for one year after shipment.
Storage Buffer:
PBS with 50% Glycerol, 0.05% Proclin300, 0.5% BSA, pH 7.3.
Aliquoting is unnecessary for -20°C storage

*** 20ul sizes contain 0.1% BSA

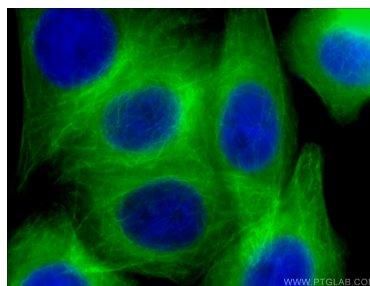
For technical support and original validation data for this product please contact:
T: 1 (888) 4PTGLAB (1-888-478-4522) (toll free in USA), or 1(312) 455-8498 (outside USA)
E: proteintech@ptglab.com
W: ptglab.com

This product is exclusively available under Proteintech Group brand and is not available to purchase from any other manufacturer.

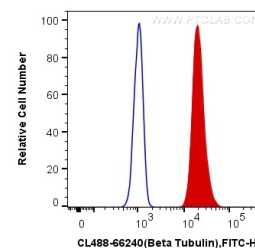
Selected Validation Data



Various lysates were subjected to SDS PAGE followed by western blot with CL488-66240 (Beta Tubulin antibody) at dilution of 1:5000 incubated at room temperature for 1.5 hours.



Immunofluorescent analysis of (4% PFA) fixed HepG2 cells using CL488-66240 (beta Tubulin antibody) at dilution of 1:100.



1X10⁶ HeLa cells were intracellularly stained with 0.4 ug CoraLite® Plus 488 Anti-Human Beta Tubulin (CL488-66240, Clone:1D4A4) (red), or 0.4 ug Mouse IgG2a Isotype Control (CL488-66360-2, Clone: K11A1B2A2) (blue). Cells were fixed with 4% PFA and permeabilized with Flow Cytometry Perm Buffer (PF00011-C).