

For Research Use Only

CoraLite® Plus 488-conjugated Annexin V Monoclonal antibody

Catalog Number: CL488-66245

Featured Product



Basic Information

Catalog Number:

CL488-66245

GenBank Accession Number:

BC001429

Purification Method:

Protein G purification

Size:

100ul , Concentration: 1000 ug/ml by 308

GeneID (NCBI):

308

CloneNo.:

1E6A8

Nanodrop;

UNIPROT ID:

P08758

Recommended Dilutions:

IF/ICC 1:50-1:500

Source:

Mouse

Full Name:

annexin A5

Excitation/Emission maxima wavelengths:

493 nm / 522 nm

Isotype:

IgG1

Calculated MW:

36 kDa

Immunogen Catalog Number:

AG1538

Observed MW:

36 kDa

Applications

Tested Applications:

IF/ICC

Positive Controls:

IF/ICC : HeLa cells,

Species Specificity:

human

Background Information

Annexin A5 (ANXA5), is a member of the structurally related family of annexin proteins some of which have been implicated in membrane-related events along exocytotic and endocytotic pathways. Annexin 5 is a phospholipase A2 and protein kinase C inhibitory protein with calcium channel activity and a potential role in cellular signal transduction, inflammation, growth and differentiation. Annexin 5 has also been described as placental anticoagulant protein I, vascular anticoagulant-alpha, endonexin II, lipocortin V, placental protein 4 and anchorin CII. This antibody is conjugated with CL488, Ex/Em 488 nm/515 nm.

Storage

Storage:

Store at -20°C. Avoid exposure to light. Stable for one year after shipment.

Storage Buffer:

PBS with 50% Glycerol, 0.05% Proclin300, 0.5% BSA, pH 7.3.

Aliquoting is unnecessary for -20°C storage

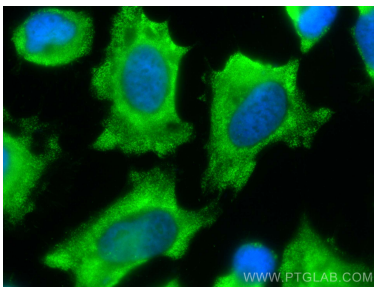
For technical support and original validation data for this product please contact:

T: 1 (888) 4PTGLAB (1-888-478-4522) (toll free in USA), or 1(312) 455-8498 (outside USA)

E: proteintech@ptglab.com
W: ptglab.com

This product is exclusively available under Proteintech Group brand and is not available to purchase from any other manufacturer.

Selected Validation Data



Immunofluorescent analysis of (-20°C Methanol) fixed HeLa cells using Coralite® Plus 488 Annexin V antibody (CL488-66245, Clone: 1E6A8) at dilution of 1:200.