

For Research Use Only

CoraLite® Plus 488-conjugated C-Reactive Protein/CRP Monoclonal antibody

Catalog Number: CL488-66250

Featured Product



Basic Information

Catalog Number:

CL488-66250

Size:

100ul , Concentration: 1000 ug/ml by Nanodrop;

Source:

Mouse

Isotype:

IgG2a

Immunogen Catalog Number:

AG9883

GenBank Accession Number:

BC020766

GeneID (NCBI):

1401

UNIPROT ID:

P02741

Full Name:

C-reactive protein, pentraxin-related

Calculated MW:

224 aa, 25 kDa

Observed MW:

27 kDa

Purification Method:

Protein A purification

CloneNo.:

3F10A11

Recommended Dilutions:

IF-P 1:50-1:500

Excitation/Emission maxima wavelengths:

493 nm / 522 nm

Applications

Tested Applications:

IF-P

Species Specificity:

human, mouse, rat, pig

Positive Controls:

IF-P : human liver tissue,

Background Information

C-reactive protein (CRP) is an acute-phase serum protein synthesized by the liver in response to interleukin-6 (IL-6) during inflammation. The name of CRP derives from its ability to react with the C polysaccharide of Streptococcus pneumoniae. CRP is an annular, pentameric protein that belongs to the pentraxin family of proteins. CRP displays several functions associated with host defense: it promotes agglutination, bacterial capsular swelling, phagocytosis and complement fixation through its calcium-dependent binding to phosphorylcholine. It is used mainly as a marker of inflammation.

Storage

Storage:

Store at -20°C. Avoid exposure to light. Stable for one year after shipment.

Storage Buffer:

PBS with 50% Glycerol, 0.05% Proclin300, 0.5% BSA, pH 7.3.

Aliquoting is unnecessary for -20°C storage

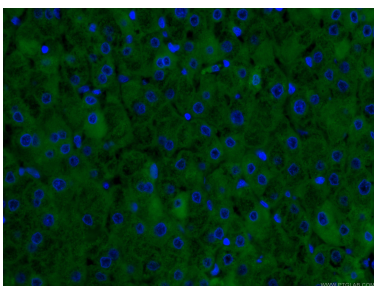
For technical support and original validation data for this product please contact:

T: 1 (888) 4PTGLAB (1-888-478-4522) (toll free in USA), or 1(312) 455-8498 (outside USA)

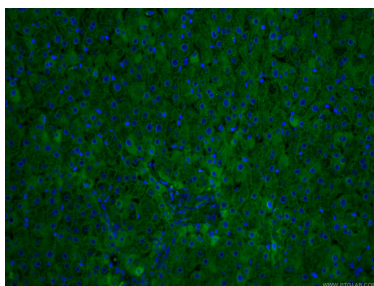
E: proteintech@ptglab.com
W: ptglab.com

This product is exclusively available under Proteintech Group brand and is not available to purchase from any other manufacturer.

Selected Validation Data



Immunofluorescent analysis of (4% PFA) fixed human liver tissue using CL488-66250 (CRP antibody) at dilution of 1:100.



Immunofluorescent analysis of (4% PFA) fixed human liver tissue using CL488-66250 (CRP antibody) at dilution of 1:100.