

For Research Use Only

CoraLite® Plus 488-conjugated AKAP3 Monoclonal antibody



Catalog Number: CL488-66255

Basic Information

Catalog Number: CL488-66255	GenBank Accession Number: BC047535	Purification Method: Protein A purification
Size: 100ul , Concentration: 1000 µg/ml by Nanodrop;	GeneID (NCBI): 10566	CloneNo.: 3C11H9
Source: Mouse	Full Name: A kinase (PRKA) anchor protein 3	Recommended Dilutions: IF 1:50-1:500
Isotype: IgG2a	Calculated MW: 95 kDa	Excitation/Emission maxima wavelengths: 493 nm / 522 nm
Immunogen Catalog Number: AG4885	Observed MW: 100 kDa	

Applications

Tested Applications: IF	Positive Controls: IF : mouse testis tissue,
Species Specificity: human, mouse	

Background Information

AKAP3 is a member of A-kinase anchoring proteins (AKAPs), a family of functionally related proteins that target protein kinase A to discrete locations within the cell. AKAP3 is reported to participate in protein-protein interactions with the R-subunit of the protein kinase A as well as sperm-associated proteins. AKAP3 is expressed in spermatozoa and localized to the acrosomal region of the sperm head as well as the length of the principal piece. It may function as a regulator of motility, capacitation, and the acrosome reaction.

Storage

Storage:
Store at -20°C. Avoid exposure to light. Stable for one year after shipment.
Storage Buffer:
PBS with 50% Glycerol, 0.05% Proclin300, 0.5% BSA, pH 7.3.
Aliquoting is unnecessary for -20°C storage

*** 20ul sizes contain 0.1% BSA

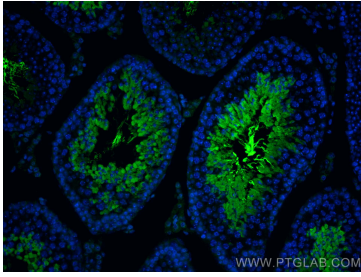
For technical support and original validation data for this product please contact:

T: 1 (888) 4PTGLAB (1-888-478-4522) (toll free
in USA), or 1(312) 455-8498 (outside USA)

E: proteintech@ptglab.com
W: ptglab.com

This product is exclusively available under Proteintech Group brand and is not available to purchase from any other manufacturer.

Selected Validation Data



Immunofluorescent analysis of (4% PFA) fixed mouse testis tissue using CoraLite® Plus 488 AKAP3 antibody (CL488-66255, Clone: 3C11H9) at dilution of 1:200.