

For Research Use Only

CoraLite® Plus 488-conjugated Alpha 1B-Glycoprotein Monoclonal antibody

Catalog Number:CL488-66260



Basic Information

Catalog Number: CL488-66260	GenBank Accession Number: BC035719	Purification Method: Protein G purification
Size: 100ul , Concentration: 1000 ug/ml by 1 Nanodrop;	GeneID (NCBI): 1	CloneNo.: 4D4E5
Source: Mouse	UNIPROT ID: P04217	Recommended Dilutions: IF/ICC 1:50-1:500
Isotype: IgG1	Full Name: alpha-1-B glycoprotein	Excitation/Emission maxima wavelengths: 493 nm / 522 nm
Immunogen Catalog Number: AG5414	Calculated MW: 54 kDa	
	Observed MW: 72 kDa	

Applications

Tested Applications: IF/ICC	Positive Controls: IF/ICC : HepG2 cells,
Species Specificity: human	

Background Information

Alpha-1B-glycoprotein (A1BG) is a plasma protein and is a member of the immunoglobulin superfamily. A1BG contains 474 amino acids and has 5 intrachain disulfide bonds. It has been reported that cysteine-rich secretory protein 3 (CRISP-3) is a specific and high-affinity ligand of A1BG. A1BG-CRISP-3 complex displays a similar function in protecting the circulation from a potentially harmful effect of free CRISP3 (PMID: 15461460).

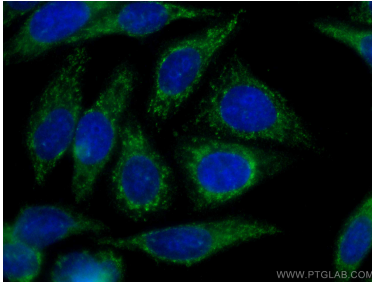
Storage

Storage:
Store at -20°C. Avoid exposure to light. Stable for one year after shipment.
Storage Buffer:
PBS with 50% Glycerol, 0.05% Proclin300, 0.5% BSA, pH 7.3.
Aliquoting is unnecessary for -20°C storage

For technical support and original validation data for this product please contact:
T: 1 (888) 4PTGLAB (1-888-478-4522) (toll free in USA), or 1(312) 455-8498 (outside USA)
E: proteintech@ptglab.com
W: ptglab.com

This product is exclusively available under Proteintech Group brand and is not available to purchase from any other manufacturer.

Selected Validation Data



Immunofluorescent analysis of (-20°C Ethanol) fixed HepG2 cells using Coralite® Plus 488 Alpha 1B-Glycoprotein antibody (CL488-66260, Clone: 4D4E5) at dilution of 1:100.