

For Research Use Only

# CoraLite®488-conjugated PAI-1 Monoclonal antibody



Catalog Number:CL488-66261

## Basic Information

<b>Catalog Number:</b> CL488-66261	<b>GenBank Accession Number:</b> BC010860	<b>Purification Method:</b> Protein G purification
<b>Size:</b> 100UL, Concentration: 1000 µg/ml by Nanodrop;	<b>GeneID (NCBI):</b> 5054	<b>CloneNo.:</b> 1H4A5
<b>Source:</b> Mouse	<b>Full Name:</b> serpin peptidase inhibitor, clade E (nexin, plasminogen activator inhibitor type 1), member 1	<b>Recommended Dilutions:</b> IF 1:50-1:500
<b>Isotype:</b> IgG1	<b>Calculated MW:</b> 402 aa, 45 kDa	<b>Excitation/Emission maxima wavelengths:</b> 488 nm/515 nm
<b>Immunogen Catalog Number:</b> AG22411	<b>Observed MW:</b> 50 kDa	

## Applications

<b>Tested Applications:</b> IF, ELISA	<b>Positive Controls:</b> IF : HepG2 cells,
<b>Species Specificity:</b> human, pig	

## Background Information

SERPINE1, also named as Plasminogen activator inhibitor type 1 (PAI-1), is a member of the serine protease inhibitor (SERPIN) superfamily. PAI-1 is the principal inhibitor of tissue plasminogen activator (tPA) and uPA, and hence is an inhibitor of fibrinolysis. Defects in this gene are the cause of plasminogen activator inhibitor-1 deficiency (PAI-1 deficiency), and high concentrations of the gene product are associated with thrombophilia.

## Storage

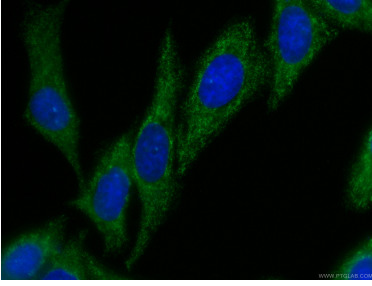
**Storage:**  
Store at -20°C. Avoid exposure to light. Stable for one year after shipment.  
**Storage Buffer:**  
PBS with 50% Glycerol, 0.05% Proclin300, 0.5% BSA, pH 7.3.  
Aliquoting is unnecessary for -20°C storage

For technical support and original validation data for this product please contact:  
T: 1 (888) 4PTGLAB (1-888-478-4522) (toll free in USA), or 1(312) 455-8498 (outside USA)  
E: proteintech@ptglab.com  
W: ptglab.com

This product is exclusively available under Proteintech Group brand and is not available to purchase from any other manufacturer.

---

## Selected Validation Data



Immunofluorescent analysis of (-20°C Ethanol) fixed HepG2 cells using CL488-66261 (PAI-1 antibody) at dilution of 1:100.