

For Research Use Only

CoraLite® Plus 488-conjugated FRS2 Monoclonal antibody

Catalog Number: CL488-66263



Basic Information

Catalog Number: CL488-66263	GenBank Accession Number: BC021562	Purification Method: Protein A purification
Size: 100ul , Concentration: 1000 ug/ml by Nanodrop;	GeneID (NCBI): 10818	CloneNo.: 4E10H12
Source: Mouse	UNIPROT ID: Q8WU20	Recommended Dilutions: IF/ICC 1:50-1:500
Isotype: IgG3	Full Name: fibroblast growth factor receptor substrate 2	Excitation/Emission maxima wavelengths: 493 nm / 522 nm
Immunogen Catalog Number: AG19299	Calculated MW: 60 kDa	
	Observed MW: 68 kDa	

Applications

Tested Applications: IF/ICC, FC (Intra)	Positive Controls: IF/ICC : MCF-7 cells,
Species Specificity: human	

Background Information

Fibroblast growth factor (FGF) receptor substrate 2 (FRS2) has an alternative name as SNT-1, it is an adapter protein that links activated FGR and NGF receptors to downstream signaling pathways. FGF receptor substrates (FRS2 and FRS3) are key adaptor proteins that mediate FGF-FGFR signalling in benign as well as malignant tissue. FRS2 is a 508 amino-acid protein, which is phosphorylated on tyrosine residues. The molecular weight of non-phosphorylated FRS2 is 57-68 kDa, but phosphorylated FRS2 is 80-90 kDa. Phosphorylation of FRS2 is associated with activation of a number of MAP kinases. Allele-specific regulation of FGFR2 mRNA expression with a mildly increased breast cancer risk has been reported.

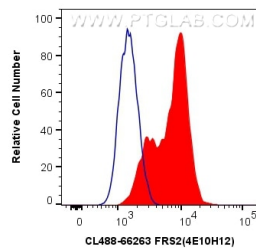
Storage

Storage:
Store at -20°C. Avoid exposure to light. Stable for one year after shipment.
Storage Buffer:
PBS with 50% Glycerol, 0.05% Proclin300, 0.5% BSA, pH 7.3.
Aliquoting is unnecessary for -20°C storage

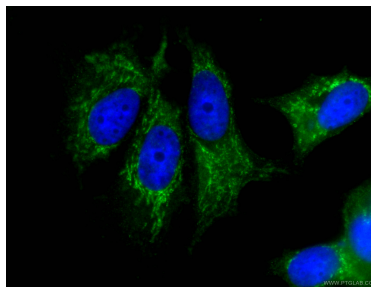
For technical support and original validation data for this product please contact:
T: 1 (888) 4PTGLAB (1-888-478-4522) (toll free in USA), or 1(312) 455-8498 (outside USA)
E: proteintech@ptglab.com
W: ptglab.com

This product is exclusively available under Proteintech Group brand and is not available to purchase from any other manufacturer.

Selected Validation Data



1X10⁶ MCF-7 cells were intracellularly stained with 0.4 ug CoraLite® Plus 488 Anti-Human FRS2 (CL488-66263, Clone:4E10H12) (red), or 0.4 ug Control Antibody. Cells were fixed with 4% PFA and permeabilized with Flow Cytometry Perm Buffer (PF00011-C).



Immunofluorescent analysis of (-20°C Ethanol) fixed MCF-7 cells using CL488-66263 (FRS2 antibody) at dilution of 1:100.