

For Research Use Only

CoraLite® Plus 488-conjugated KGA-Specific Monoclonal antibody

Catalog Number:CL488-66265



Basic Information

Catalog Number:

CL488-66265

GenBank Accession Number:

BC038507

Purification Method:

Protein G purification

Size:

100ul , Concentration: 1000 ug/ml by Nanodrop;

GeneID (NCBI):

2744

CloneNo.:

1B11A11

Source:

Mouse

UNIPROT ID:

O94925

Recommended Dilutions:

WB 1:500-1:1000

IF-P 1:50-1:500

Isotype:

IgG1

Full Name:

glutaminase

Excitation/Emission maxima wavelengths:

493 nm / 522 nm

Immunogen Catalog Number:

AG24227

Calculated MW:

669 aa, 73 kDa

Observed MW:

65 kDa

Applications

Tested Applications:

WB, IF-P

Positive Controls:

WB : NIH/3T3 cells, mouse brain tissue

Species Specificity:

human, mouse, rat

IF-P : mouse brain tissue,

Background Information

GLS, also named as GLS1 and KIAA0838, belongs to the glutaminase family. It catalyzes the first reaction in the primary pathway for the renal catabolism of glutamine. Glutaminase-, glutamate-, and taurine-immunoreactive neurons develop neurofibrillary tangles in Alzheimer's disease. The glutaminase band in AA/C1 cells is more intense than in HT29 cells, in accordance with measurements of glutaminase activity, and had the same molecular mass of approx. 63 kDa. The bands for both cell lines are clearly different in size from both rat liver glutaminase (58 kDa) and rat kidney glutaminase (65 kDa)(PMID: 12408749). It also reveals a molecular weight of 83-84 kDa as a phosphate-dependent glutaminase(PMID: 447624;7512428). It has 3 isoforms produced by alternative splicing named as KGA, GAM, GAC. This antibody is specific to KGA.

Storage

Storage:

Store at -20°C. Avoid exposure to light. Stable for one year after shipment.

Storage Buffer:

PBS with 50% Glycerol, 0.05% Proclin300, 0.5% BSA, pH 7.3.

Aliquoting is unnecessary for -20°C storage

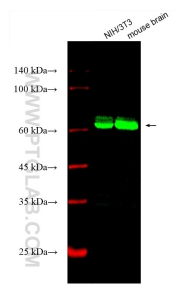
For technical support and original validation data for this product please contact:

T: 1 (888) 4PTGLAB (1-888-478-4522) (toll free in USA), or 1(312) 455-8498 (outside USA)

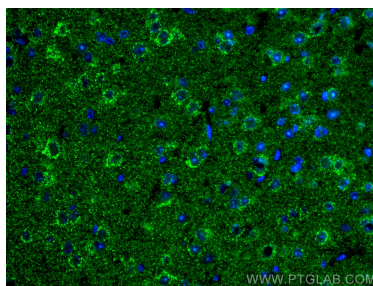
E: proteintech@ptglab.com
W: ptglab.com

This product is exclusively available under Proteintech Group brand and is not available to purchase from any other manufacturer.

Selected Validation Data



Various lysates were subjected to SDS PAGE followed by western blot with CL488-66265 (KGA-Specific antibody) at dilution of 1:500 incubated at room temperature for 1.5 hours.



Immunofluorescent analysis of (4% PFA) fixed mouse brain tissue using CoraLite® Plus 488 KGA-Specific antibody (CL488-66265, Clone: 1B11A11) at dilution of 1:200.