

For Research Use Only

CoraLite® Plus 488-conjugated SRPX2 Monoclonal antibody

Catalog Number: CL488-66266

Featured Product



Basic Information

Catalog Number:

CL488-66266

Size:

100ul , Concentration: 1000 ug/ml by Nanodrop;

Source:

Mouse

Isotype:

IgG2b

Immunogen Catalog Number:

AG8084

GenBank Accession Number:

BC020733

GeneID (NCBI):

27286

UNIPROT ID:

O60687

Full Name:

sushi-repeat-containing protein, X-linked 2

Calculated MW:

465 aa, 53 kDa

Observed MW:

53 kDa

Purification Method:

Protein A purification

CloneNo.:

2A1D7

Recommended Dilutions:

IF/ICC 1:50-1:500

Excitation/Emission maxima wavelengths:

493 nm / 522 nm

Applications

Tested Applications:

IF/ICC

Species Specificity:

human, pig, mouse

Positive Controls:

IF/ICC : A549 cells,

Background Information

SRPX2 (sushi-repeat-containing protein, X-linked 2) is a secreted protein expressed in neurons of the human adult brain, including the rolandic area (PMID: 20874700). Firstly described as sushi-repeat protein up-regulated in leukemia (SPRUL) in leukemia cells with dysregulated expression at the transcriptional level, SRPX2 has been recently shown as a multifunctional protein. SRPX2 is a ligand for uPAR, the urokinase-type plasminogen activator (uPA) receptor (PMID: 18718938). It is involved in seizure disorders, angiogenesis and cellular adhesion (PMID: 22242148; 19667118; 16497722). The involvement of SRPX2 in disorders of language cortex suggests it has an important role in the perisylvian region critical for language and cognitive development (PMID: 16497722).

Storage

Storage:

Store at -20°C. Avoid exposure to light. Stable for one year after shipment.

Storage Buffer:

PBS with 50% Glycerol, 0.05% Proclin300, 0.5% BSA, pH 7.3.

Aliquoting is unnecessary for -20°C storage

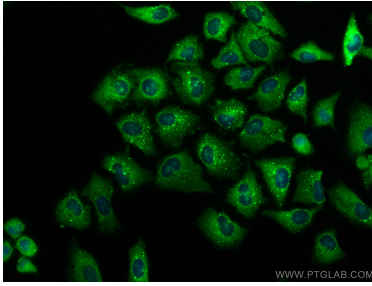
For technical support and original validation data for this product please contact:

T: 1 (888) 4PTGLAB (1-888-478-4522) (toll free in USA), or 1(312) 455-8498 (outside USA)

E: proteintech@ptglab.com
W: ptglab.com

This product is exclusively available under Proteintech Group brand and is not available to purchase from any other manufacturer.

Selected Validation Data



Immunofluorescent analysis of (-20°C Methanol) fixed A549 cells using CoraLite® Plus 488 SRPX2 antibody (CL488-66266, Clone: 2A1D7) at dilution of 1:200.