

For Research Use Only

CoraLite® Plus 488-conjugated C1qC Monoclonal antibody

Catalog Number: CL488-66268



Basic Information

Catalog Number:

CL488-66268

Size:

100ul , Concentration: 1000 ug/ml by Nanodrop;

Source:

Mouse

Isotype:

IgM

Immunogen Catalog Number:

AG10233

GenBank Accession Number:

BC009016

GeneID (NCBI):

714

UNIPROT ID:

P02747

Full Name:

complement component 1, q subcomponent, C chain

Calculated MW:

245 aa, 26 kDa

Observed MW:

26 kDa

Purification Method:

Thiophilic affinity chromatograph

CloneNo.:

1C5B4

Recommended Dilutions:

IF/ICC 1:50-1:500

Excitation/Emission maxima wavelengths:

493 nm / 522 nm

Applications

Tested Applications:

IF/ICC

Species Specificity:

human

Positive Controls:

IF/ICC : HUVEC cells,

Background Information

The first component of complement, C1, is a calcium-dependent complex of the 3 subcomponents C1q, C1r, and C1s. C1q is composed of 18 polypeptide chains: six A-chains, six B-chains, and six C-chains. Each chain contains a collagen-like region located near the N terminus and a C-terminal globular region. Deficiency of C1q has been associated with lupus erythematosus and glomerulonephritis. This antibody is raised against C1qC which is the C-chain polypeptide of human complement subcomponent C1q.

Storage

Storage:

Store at -20°C. Avoid exposure to light. Stable for one year after shipment.

Storage Buffer:

PBS with 50% Glycerol, 0.05% Proclin300, 0.5% BSA, pH 7.3.

Aliquoting is unnecessary for -20°C storage

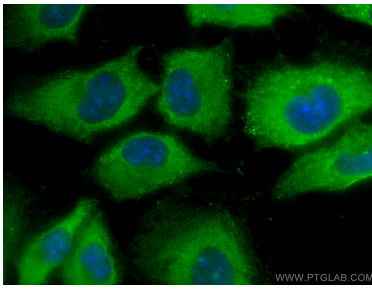
For technical support and original validation data for this product please contact:

T: 1 (888) 4PTGLAB (1-888-478-4522) (toll free in USA), or 1(312) 455-8498 (outside USA)

E: proteintech@ptglab.com
W: ptglab.com

This product is exclusively available under Proteintech Group brand and is not available to purchase from any other manufacturer.

Selected Validation Data



Immunofluorescent analysis of (-20°C Methanol) fixed HUVEC cells using CoraLite® Plus 488 C1qC antibody (CL488-66268, Clone: 1C5B4) at dilution of 1:200.