

For Research Use Only

CoraLite® Plus 488-conjugated CLTCL1 Monoclonal antibody

Catalog Number: CL488-66274



Basic Information

Catalog Number: CL488-66274	GenBank Accession Number: NM_007098	Purification Method: Protein A purification
Size: 100ul , Concentration: 1000 ug/ml by Nanodrop;	GeneID (NCBI): 8218	CloneNo.: 1B5A10
Source: Mouse	UNIPROT ID: P53675	Recommended Dilutions: IF/ICC 1:50-1:500
Isotype: IgG2a	Full Name: clathrin, heavy chain-like 1	Excitation/Emission maxima wavelengths: 493 nm / 522 nm
	Calculated MW: 187 kDa	
	Observed MW: 180 kDa	

Applications

Tested Applications: IF/ICC	Positive Controls: IF/ICC : HeLa cells,
Species Specificity: human	

Background Information

CLTCL1, also named as CLH22, CLTCL and CLTD, belongs to the clathrin heavy chain family. Clathrin is the major protein of the polyhedral coat of coated pits and vesicles. Two different adapter protein complexes link the clathrin lattice either to the plasma membrane or to the trans-Golgi network. The antibody is specific to CLTCL1. It has no cross reaction to CLTC.

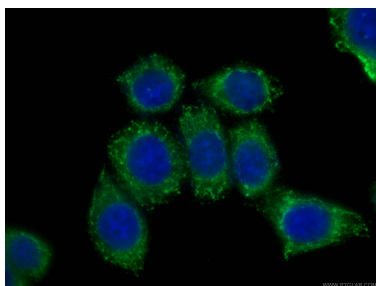
Storage

Storage:
Store at -20°C. Avoid exposure to light. Stable for one year after shipment.
Storage Buffer:
PBS with 50% Glycerol, 0.05% Proclin300, 0.5% BSA, pH 7.3.
Aliquoting is unnecessary for -20°C storage

For technical support and original validation data for this product please contact:
T: 1 (888) 4PTGLAB (1-888-478-4522) (toll free in USA), or 1(312) 455-8498 (outside USA)
E: proteintech@ptglab.com
W: ptglab.com

This product is exclusively available under Proteintech Group brand and is not available to purchase from any other manufacturer.

Selected Validation Data



Immunofluorescent analysis of (-20°C Ethanol) fixed HeLa cells using CL488-66274 (CLTCL1 antibody) at dilution of 1:100.