

For Research Use Only

CoraLite® Plus 488-conjugated CAPG Monoclonal antibody



Catalog Number: CL488-66277

Featured Product

Basic Information

Catalog Number: CL488-66277	GenBank Accession Number: BC000728	Purification Method: Protein G purification
Size: 100ul , Concentration: 1000 µg/ml by Nanodrop;	GeneID (NCBI): 822	CloneNo.: 3A5B2
Source: Mouse	Full Name: capping protein (actin filament), gelsolin-like	Recommended Dilutions: IF 1:50-1:500
Isotype: IgG1	Calculated MW: 39 kDa	Excitation/Emission maxima wavelengths: 488 nm / 515 nm
Immunogen Catalog Number: AG24676	Observed MW: 39-40 kDa	

Applications

Tested Applications: IF	Positive Controls: IF : HeLa cells,
Species Specificity: human	

Background Information

CapG (gelsolin-like actin-capping protein) is a member of the gelsolin superfamily proteins, which regulates actin filament length by capping or severing filaments. Studies have shown a role for CapG in regulating cell motility. The expression of CapG is upregulated under hypoxia and in turn increases the motility of cells. Recently it has been reported that the overexpression of CapG is associated with the progression of lung adenocarcinoma as well as lymphatic invasion status of cholangiocarcinoma, which may be used for prognosis of these tumors. (21908955,22155129)

Storage

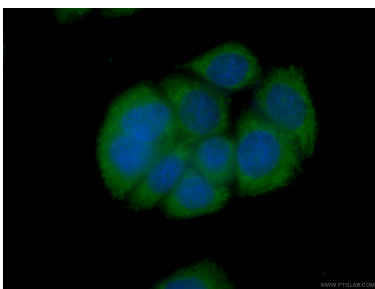
Storage:
Store at -20°C. Avoid exposure to light. Stable for one year after shipment.
Storage Buffer:
PBS with 50% Glycerol, 0.05% Proclin300, 0.5% BSA, pH 7.3.
Aliquoting is unnecessary for -20°C storage

*** 20ul sizes contain 0.1% BSA

For technical support and original validation data for this product please contact:
T: 1 (888) 4PTGLAB (1-888-478-4522) (toll free in USA), or 1(312) 455-8498 (outside USA)
E: proteintech@ptglab.com
W: ptglab.com

This product is exclusively available under Proteintech Group brand and is not available to purchase from any other manufacturer.

Selected Validation Data



Immunofluorescent analysis of (-20°C Ethanol) fixed HeLa cells using CL488-66277 (CAPG antibody) at dilution of 1:100.