

For Research Use Only

CoraLite® Plus 488-conjugated OGDH Monoclonal antibody

Catalog Number: CL488-66285



Basic Information

Catalog Number: CL488-66285	GenBank Accession Number: BC004964	Purification Method: Protein A purification
Size: 100ul , Concentration: 1000 ug/ml by Nanodrop;	GeneID (NCBI): 4967	CloneNo.: 1H7A2
Source: Mouse	UNIPROT ID: Q02218	Recommended Dilutions: IF/ICC 1:50-1:500
Isotype: IgG2b	Full Name: oxoglutarate (alpha-ketoglutarate) dehydrogenase (lipoamide)	Excitation/Emission maxima wavelengths: 493 nm / 522 nm
Immunogen Catalog Number: AG7484	Calculated MW: 116 kDa	
	Observed MW: 116 kDa	

Applications

Tested Applications: IF/ICC	Positive Controls: IF/ICC : HepG2 cells, L02 cells
Species Specificity: human, rat	

Background Information

OGDH(2-oxoglutarate dehydrogenase, mitochondrial) is also named as OGDC-E1 and belongs to the alpha-ketoglutarate dehydrogenase family. It is one of the three enzymatic components of 2-oxoglutarate dehydrogenase complex, which catalyzes the overall conversion of 2-oxoglutarate to succinyl-CoA and CO₂. This protein has 3 isoforms produced by alternative splicing.

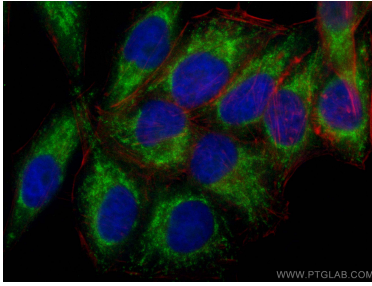
Storage

Storage:
Store at -20°C. Avoid exposure to light. Stable for one year after shipment.
Storage Buffer:
PBS with 50% Glycerol, 0.05% Proclin300, 0.5% BSA, pH 7.3.
Aliquoting is unnecessary for -20°C storage

For technical support and original validation data for this product please contact:
T: 1 (888) 4PTGLAB (1-888-478-4522) (toll free in USA), or 1(312) 455-8498 (outside USA)
E: proteintech@ptglab.com
W: ptglab.com

This product is exclusively available under Proteintech Group brand and is not available to purchase from any other manufacturer.

Selected Validation Data



Immunofluorescent analysis of (-20°C Ethanol) fixed HepG2 cells using CoraLite® Plus 488 OGDH antibody (CL488-66285, Clone: 1H7A2) at dilution of 1:200, CL594-phalloidin (red).