

For Research Use Only

CoraLite® Plus 488-conjugated MYL3 Monoclonal antibody

Catalog Number: CL488-66286



Basic Information

Catalog Number: CL488-66286	GenBank Accession Number: BC009790	Purification Method: Protein G purification
Size: 100ul , Concentration: 1000 ug/ml by Nanodrop;	GeneID (NCBI): 4634	CloneNo.: 2E4B2
Source: Mouse	UNIPROT ID: P08590	Recommended Dilutions: IF-P 1:50-1:500 IF/ICC 1:50-1:500
Isotype: IgG1	Full Name: myosin, light chain 3, alkali; ventricular, skeletal, slow	Excitation/Emission maxima wavelengths: 493 nm / 522 nm
Immunogen Catalog Number: AG24535	Calculated MW: 22 kDa Observed MW: 22-25 kDa	

Applications

Tested Applications: IF/ICC, IF-P	Positive Controls:
Species Specificity: human, mouse, rat, pig	IF-P : mouse skeletal muscle tissue, IF/ICC : C2C12 cells,

Background Information

MYL3, also named as MLC1v, is an essential light chain of myosin that is associated with muscle contraction. It is expressed in ventricular and slow skeletal muscle. MYL3 may serve as a target for caspase-3 in dying cardiomyocytes. Mutations of MYL3 gene cause hypertrophic cardiomyopathy. MYL3 has been identified as potential serum biomarker for drug induced myotoxicity. Great increase in MYL3 serum concentration has been observed in rats with cardiac and skeletal muscle injury. (PMID:21685905)

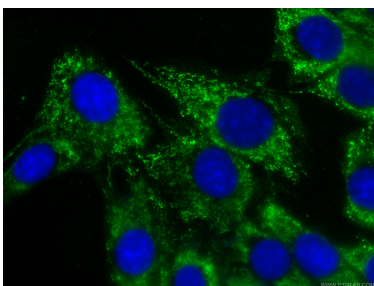
Storage

Storage:
Store at -20°C. Avoid exposure to light. Stable for one year after shipment.
Storage Buffer:
PBS with 50% Glycerol, 0.05% Proclin300, 0.5% BSA, pH 7.3.
Aliquoting is unnecessary for -20°C storage

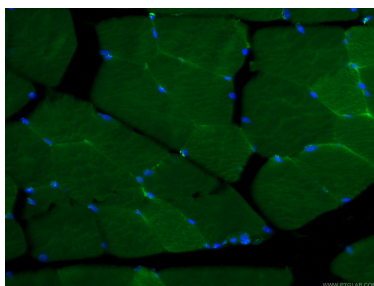
For technical support and original validation data for this product please contact:
T: 1 (888) 4PTGLAB (1-888-478-4522) (toll free in USA), or 1(312) 455-8498 (outside USA)
E: proteintech@ptglab.com
W: ptglab.com

This product is exclusively available under Proteintech Group brand and is not available to purchase from any other manufacturer.

Selected Validation Data



Immunofluorescent analysis of (-20°C Ethanol) fixed C2C12 cells using CL488-66286 (MYL3 antibody) at dilution of 1:100.



Immunofluorescent analysis of (4% PFA) fixed mouse skeletal muscle tissue using CL488-66286 (MYL3 antibody) at dilution of 1:100.